

# WEST CHELTENHAM DIRECTORY

2023–2024



Photo by Sharon McCutcheon on Unsplash

WEST CHELTENHAM  
PARTNERSHIP



# WEST CHELTENHAM DIRECTORY

This directory aims to promote local activities, services, facilities, groups and organisations throughout West Cheltenham. The area covered can be seen on the map on the centre pages and includes Hesters Way, St Marks and St Peters, Rowanfield, Arle, Springbank and Fiddlers Green.

The breadth of the entries shows what local people have achieved. A big thank you to all the contributors for providing information.

We hope you find the directory a useful first step in finding the service, activity or venue you need.

The directory has been delivered to every household in West Cheltenham and is designed, produced and funded by the Hesters Way Partnership. It can be viewed online;

[www.westcheltenham.org/directory](http://www.westcheltenham.org/directory)



# CONTENTS – click on number to navigate online

<a href="#">4</a>	PARKS and GARDENS
<a href="#">8</a>	SPORTS CLUBS and VENUES
<a href="#">14</a>	EDUCATION
<a href="#">20</a>	YOUTH GROUPS
<a href="#">24</a>	MAP
<a href="#">26</a>	MEDICAL and HEALTH
<a href="#">28</a>	VENUES and CHURCHES
<a href="#">33</a>	LOCAL GEMS
<a href="#">45</a>	LOCAL DEMOCRACY
<a href="#">46</a>	INDEX A-Z



KING GEORGE FIFTH (KGV)  
Brooklyn Road / Bedford Avenue, St Marks



# Parks

**CHELT WALK PARK**  
Princess Elizabeth Way to The Moors and Arle Road

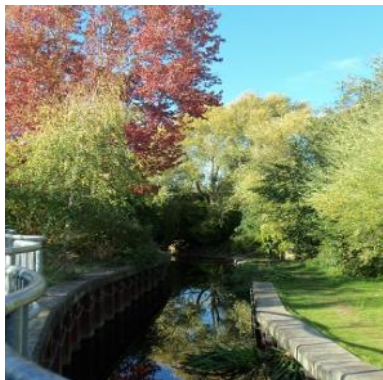


## CHELT WALK PARK

### Princess Elizabeth Way to The Moors

The park runs along the River Chelt from Princess Elizabeth Way past the Saracens football ground to Arle Road.

It features a main play area at the western side linked by a cycle and walking route via the Moors to a second play area at the former Christ College development. It's a quiet and secluded park, great to relax and walk on a summers day.



## FIDDLERS GREEN PARK

### Fiddlers Green Lane

A small park between Springbank Road and Fiddlers Green Lane with a children's play area and basketball hoop. There is no path and the park needs some TLC but offers dog walking and summer sports. Trees were planted by the Hesters Way Forum in 2021.

## GEORGE READINGS PLAY AREA

### George Readings Way, off PE Way

Small local park on George Readings Way and also easy access via Village Road with lots of play equipment, a basketball hoop and children's play equipment.



## GRIFFITHS AVENUE NATURE RESERVE (GANR)

### Griffiths Avenue, St Marks

GANR can be accessed via the driveway opposite Chad Road and accommodates a Victorian stable building and walled garden in over 2.5 acres of land. It was part of the old Granleys Estate and the first nature reserve in the borough to receive Local Nature Reserve status.

There are two wild flower meadows supporting over fifteen species of butterfly and a wealth of flowers and grasses. A range of small mammals including badgers, foxes and bats have made their homes on the reserve. There is also a varied range of trees including Monterey Cypress and Wellingtonia Sequoia. Open to all but please respect the wildlife.





## HESTERS WAY PARK aka FISHY PARK

### Princess Elizabeth (PE) Way

Access to Fishy Park is via Kempton Grove, PE Way and Gloucestershire College. There is also pedestrian access to the rear of GCHQ.

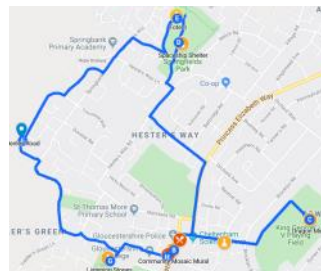
You'll find a small but excellent play area and mature trees throughout the park. Look out for Cheltenham's secret treasure: the listening stones, funded by GCHQ one of which is pictured here. More information can be found here [www.gordonyoung.net](http://www.gordonyoung.net)



## WEST CHELTENHAM PUBLIC ART TRAIL

### West Cheltenham

If you'd like to stay healthy and take in some of the public art attractions that West Cheltenham has to offer then why not have a go at the West Cheltenham Public Art Trail. The route measures 6km and takes about 1.5 hours to walk passing by ten pieces of public art on the way. [www.westcheltenham.org/](http://www.westcheltenham.org/)



## KING GEORGE FIFTH (KGV)

### Brooklyn Road / Bedford Avenue, St Marks

The park, known locally as KGV, hosts 9 football and rugby pitches, a multi use games area (MUGA) and a parkrun at 9am Saturday mornings [parkrun.org.uk/kinggeorgevplayingfield](http://parkrun.org.uk/kinggeorgevplayingfield) (see p12) Accessible from Bedford Avenue on foot or by bike and by car from Brooklyn Road which gives access to the Saracens Rugby Club pavilion, car park and changing rooms plus Rowanfield Juniors FC.

The new Listening Dragon art installation in the lower park was designed by Rob Olins [www.robolins.net/listening-dragon.html](http://www.robolins.net/listening-dragon.html)



## SPRINGFIELDS PARK

### Springbank Way, Springbank

Accessed from Springbank Way adjacent to the Springbank Community Resource Centre and Ron Smith's Pavilion, Welch Road and Hesters Way Lane, the park has been awarded Green Flag since 2011.

Facilities include; play areas, youth shelter, natural obstacle course and multi use games area, skate ramp and ponds full of wildlife!





## SMALL LOCAL PARKS

### ALSTONE CROFT PARK

#### Alstone Croft

A small open space off Alstone Croft used by local primary schools for sports and games.

### FIDDLERS GREEN PARK

#### Fiddlers Green Lane

A small park between Fiddlers Green Lane and Springbank Road with a children's play area and basketball hoop. There is no path and the park needs some TLC but offers dog walking and summer sports.

### HENLEY ROAD OPEN SPACE

#### Henley Road, Springbank

A small community park with an old football goal but good views of the open land in Springbank and very accessible for sports and dogs walking

### PILGROVE WAY PARK

#### Pilgrove Way, Springbank

A small quiet community park on Pilgrove Way adjacent to the fields at the edge of Cheltenham including play equipment and a zip wire.

### TRISCOMBE WAY PARK

#### Triscombe Way

A small community park with limited access and at the end of Triscombe Way but includes a small junior football pitch and play area.

### TUDOR COURT PARK

#### Tudor Court

A small park with children's play equipment in the new Christ College development adjacent to the YMCA sports hall accessible from College Drive off Arle Road



## PARKS DEPARTMENT / SPORT AND PLAY ACTIVITIES

For information about local parks and gardens see [www.cheltenham.gov.uk](http://www.cheltenham.gov.uk) (parks and gardens) or contact 01242 250019 [parksandgardens@cheltenham.gov.uk](mailto:parksandgardens@cheltenham.gov.uk)



# Sports Clubs and Venues







## ALL SAINTS' ACADEMY SPORTS CENTRE

**Blaisdon Way, GL51 0WH**



All Saints'  
Academy  
Cheltenham

Offers a 3G Astro Turf pitch, sports hall, dance studios along with classes and sports clubs, all open to the public.

Monday - Friday: 5pm - 10pm Saturday: 9am - 6.30pm Sunday: 9.30am - 5pm

[lettings@asachelt.org](mailto:lettings@asachelt.org) 01242 711311 [schoolhire.co.uk/cheltenham/all-saints-academy](http://schoolhire.co.uk/cheltenham/all-saints-academy)



## LEISURE at CHELTENHAM

**Tommy Taylors Lane, GL50 4RN**



Leisure at Cheltenham offers a gym, swimming, exercise classes, health spa, running track, café and children activities including the Splash Pad and Soft Play.

Brought to you by The Cheltenham Trust, Leisure at Cheltenham team is here to inspire and help you to get active, learn, socialise and exercise, whatever your age and ability.

01242 528 764 [customerservices@cheltenhamtrust.org.uk](mailto:customerservices@cheltenhamtrust.org.uk) [www.leisureatcheltenham.com](http://www.leisureatcheltenham.com)



## MULTI USE GAMES AREA (MUGA)

**Princess Elizabeth Way, GL51 7SY**

FREE to use multi sports facility based outside the OASIS Centre on Princess Elizabeth Way. Regular coaching activities during Easter and summer holidays. There are MUGAs at Springfield Park and King George V fields too!

[andyhayes@hwpartnership.org.uk](mailto:andyhayes@hwpartnership.org.uk)  
01242 575638 [www.westcheltenham.org](http://www.westcheltenham.org)





## OASIS CENTRE

Cassin Drive, Princess Elizabeth Way,  
GL51 7SY

Sports hall and meeting rooms available for public bookings. Home to Family Space and St Aidan and St Silas Church meetings and services and Friday coffee shop 10am – 12pm.

Youth activities include holiday clubs, Inclusion and Ability Hub and football coaching sessions.

01242 515815 [sport@cheltenhamymca.com](mailto:sport@cheltenhamymca.com)  
YMCA Cheltenham Sports Centre - YMCA  
[Cheltenham](#)



## PRINCE of WALES STADIUM

Tommy Taylors Lane, GL50 4RN



Brought to you by The Cheltenham Trust, Prince of Wales Stadium offers a running track and facilities for javelin, long jump, hammer, shot put and pole vault. The stadium is available to hire or can be used by members or pay as you go customers. There is disabled access to the track.

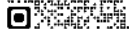
01242 528 764

[customerservices@cheltenhamtrust.org.uk](mailto:customerservices@cheltenhamtrust.org.uk)  
[www.leisureatcheltenham.com](http://www.leisureatcheltenham.com)



## YMCA SPORTS CENTRE

College Drive off Arle Road, GL51 8LE



Sports activities for all... Badminton and Badminton Coaching / Children's After School and Holiday Clubs / Dance Fit / 'Energise' - exercise for the over 50s / Fitness Suite / Home Education Sports Sessions / Judo and Karate / Short Tennis Table Tennis / Walking Football / 4-court Sports Hall available for hire / Sports Cage available for hire.

Flexible Memberships available including pay-as-you-go, monthly and annual payment plans

01242 515815 [sport@cheltenhamymca.com](mailto:sport@cheltenhamymca.com)  
YMCA Cheltenham Sports Centre - YMCA Cheltenham



YMCA  
CHELTENHAM







## SANDFORD PARK LIDO

### Keynsham Road GL53 7PU

Welcome To Paradise' Sandford Parks Lido is set in the heart of Cheltenham, with a 50 metre heated main pool. Plus, a heated children's pool and paddling pool. Open from March - October 2019 Swimming Lessons. Sporting Events, the ideal venue for family days out.

01242 524430 [www.sandfordparkslido.org.uk](http://www.sandfordparkslido.org.uk)



## CHELTENHAM TRUST—in the community

### Wilson Art Gallery and Museum, Clarence Street GL50 3JT

The Cheltenham Trust is a charity that enriches the lives of visitors and residents of Cheltenham and beyond through art, heritage, sport and play.

Working in partnerships with key organisations in Cheltenham, including, #NoChildLeftBehind, Children's Festival, Midsummer Fiesta and Community Events and more.

[www.cheltenhamtrust.org.uk](http://www.cheltenhamtrust.org.uk) 01242 387 488



## FOOTBALL / SPORTS CLUBS



### CHELTENHAM FOOTBALL CLUBS

If you want to find local clubs you can see the Cheltenham and County listings here; [cheltenhamyouthleague.co.uk/club-directory](http://cheltenhamyouthleague.co.uk/club-directory)

The FA also provides information about local football including cubs leagues referees volunteering and much more; [Find Football - Gloucestershire FA](http://FindFootball-GloucestershireFA) [www.gloucestershirefa.com](http://www.gloucestershirefa.com)



### CHELTENHAM SPA LADIES FC

#### The Corinium Stadium, Kingshill Ln, Cirencester GL7 1HS

The leading ladies' football club in Gloucestershire with almost 150 members. The first team plays in the FA Women's National League South West Division and the Reserves in the SW WFL Eastern Division.

[www.ctlfc.com](http://www.ctlfc.com) Chairman: Andrew Liddle 07900 808067  
[chairman@ctlfc.com](mailto:chairman@ctlfc.com) Kieran Neller [kieranjneller@gmail.com](mailto:kieranjneller@gmail.com)







## CHI WAI MARTIAL ARTS

Unit T1, Kingsville Road, Kingsditch TE,  
GL51 9NZ



Chi Wai Kung Fu is a modern progressive and adaptable Martial Art with a foundation in traditional styles. Chi Wai Kung Fu translates to 'Self Defence Combative Skill'. If you are looking to improve fitness, learn new skills, be safe, or just have an interesting hobby then call and book your free introductory lesson. 01242 699080 / 07863 339980  
[info@chiwai.co.uk](mailto:info@chiwai.co.uk) / [chiwai.co.uk](http://chiwai.co.uk)



## COMBINED DEFENSIVE ARTS

Unit 9b, Shaftesbury Industrial Estate, The  
Runnings, GL51 9NH

CDA was founded from our passion to access all areas of martial arts and to offer our students a unique blend of techniques and training from around the globe. By being open to the full spectrum of martial arts you quickly notice the similarities and not the differences in the many different styles. Through traditional and non-traditional training we aim to develop them into rounded, confident and skilled individuals.

[info@combineddefensivearts.com](mailto:info@combineddefensivearts.com) [www.combineddefensivearts.com](http://www.combineddefensivearts.com)  
07852 288654



## FINTAN FC

51 Arle Gardens, Rowanfield, GL51 8HP

Serving Rowanfield, St Marks, Hesters Way, Springbank and Arle, Fintan FC welcomes players from all surrounding areas. [www.pitchero.com/clubs/fintanfc/](http://www.pitchero.com/clubs/fintanfc/)

Dean / Geoff / Scott Carbin 07952 361543



## parkrun

King George V Playing Fields

FREE and timed 5k run or walk for the whole family every Saturday at 9am. Meet up at King George V playing field, near the Saracens club house. Please register first online at [www.parkrun.com](http://www.parkrun.com) and print out your own barcode.

[kinggeorgevplayingfield@parkrun.com](mailto:kinggeorgevplayingfield@parkrun.com)







## SARACENS FC

**Petersfield Park, Tewkesbury Road, GL51 9DY**

Currently plying their trade in Hellenic One West, reserves in Div 2, 3rds in Cheltenham league, various ages of youth football. 50 Years of football.



Richard Yorkse (Club Secretary) 07791-984050

Daniel Organ 07443 594983 [www.cheltenhamyouthleague.co.uk/club-directory/it/14](http://www.cheltenhamyouthleague.co.uk/club-directory/it/14)



## SARACENS CRICKET CLUB

**The Folley, Swindon Road (cricket)**

A cricket club for juniors, parents, experienced cricketers, and coaches. Daniel Organ. 01242 515855



[glosoracle.com/gloucestershire/leisure/cricket-clubs/cheltenham-saracens-cc](http://glosoracle.com/gloucestershire/leisure/cricket-clubs/cheltenham-saracens-cc)



## SARACENS RUGBY CLUB

**King George V, Brooklyn Road, GL51 8DT**

Cheltenham Saracens began life in 1974 and have lately developed a successful 1st XV. They now run 3 teams and recently they took over the management of the pavilion in KGV and grant funded its renovation.

Jimmy O'Shea 07876 195884 [cheltenham-saracensrugby.com/](http://cheltenham-saracensrugby.com/)  
[cheltsaracensrugby@hotmail.com](mailto:cheltsaracensrugby@hotmail.com)



## SAMURAI Martial Arts

**SHUKOKAI  
KARATE**



**Springbank Community Centre, GL51 OLG**

Our karate classes are friendly and welcoming with many black belts to help children of all ages and adults settle into the world of martial arts and karate. Our Karate clubs offer introductory free trial karate classes to help you and your family decide whether or not karate is for you. Our programmes offer age specific karate classes for Pre-schoolers, children, teens and adults.

You can begin lessons slowly or immerse yourself to gain a quicker proficiency. We have a comprehensive timetable allowing you to choose karate classes that fit around your existing schedule. Brian Jarvis 07971 584901 [www.samurai-martialarts.co.uk/](http://www.samurai-martialarts.co.uk/)



# Education





# NURSERIES / PLAYGROUPS



## GIGGLES NURSERY

**Springbank Community Centre, Springbank  
Way GL51 0LG**

Giggles offers care for children between the ages of 3 months and 5 years, 51 weeks of the year between 8am and 6pm. 01242 574511 [www.ncnurseries.co.uk](http://www.ncnurseries.co.uk)



## GLOUCESTER ROAD PRE SCHOOL

**Gloucester Road GL51 8PB**

Providing a caring environment in which children from the age of 2 years 9 months can learn through play and develop skills to prepare them both individually and collectively for the future.

Telephone: 01242 512792 [admin@gloucesterroad.gloucs.sch.uk](mailto:admin@gloucesterroad.gloucs.sch.uk)  
[www.gloucesterroadprimary.co.uk/](http://www.gloucesterroadprimary.co.uk/)



## LITTLE PIPS

**5—7 Arle Road, Cheltenham GL51 8JP**

Our children are at the heart of everything we do and we are "Bringing out the Best!" Sessions for babies to 5yrs Monday to Friday 8am—6pm.

[enquiries@littlepipsnursery.co.uk](mailto:enquiries@littlepipsnursery.co.uk) [littlepipsnursery.co.uk](http://littlepipsnursery.co.uk)  
01242 705645



## LITTLE SMARTIES

**Fairmount Road, GL51 7AQ**

We provide a loving environment for your child. Our staff are key and have the experience, commitment and attitude that makes the nursery such a nurturing and special place. Sessions for babies to 5yrs Monday to Friday.

01242 577 581 [info@littlesmarties.co.uk](mailto:info@littlesmarties.co.uk) / [www.littlesmarties.co.uk](http://www.littlesmarties.co.uk)



## PUDDLES NURSERY

**Hesters Way Community Centre, Cassin Drive  
GL51 7SU**

Puddles offers care for children between the ages of 3 months and 5 years, 51 weeks of the year between 8am and 6pm.

01242 527545 [ncnurseries.co.uk](http://ncnurseries.co.uk)





## St BARNABAS CHURCH PLAYGROUP

Orchard Way, GL51 7JY



Sessions for 2-4yrs term time only on  
Mon to Thur 9am—1pm Fri 9am—12pm.

[playgroup@familyspace.org.uk](mailto:playgroup@familyspace.org.uk) [ymcacheltenham.com/st-barnabas-playgroup](http://ymcacheltenham.com/st-barnabas-playgroup)



## St MARKS PLAYGROUP

St Marks and Hesters Way Community Centre, Brooklyn Road, GL51 8DS

Offering play group activities for children aged 2 to 5 years old from 9.20—3.20pm term time only. Chris McGough 01242 690025 / 07812 396974



## St THOMAS MORE NURSERY

Lewis Road, GL51 OHZ

Purpose built nursery adjacent to St Thomas More Catholic Primary School offer term time only care and education for children aged 3 to 4 years of age. Fee paying and funded children welcome. [nursery@st-thomasmore.gloucs.sch.uk](mailto:nursery@st-thomasmore.gloucs.sch.uk)  
[www.st-thomasmore.gloucs.sch.uk](http://www.st-thomasmore.gloucs.sch.uk) 01242 300146



## SPRINGBANK LITTLE LEARNERS

Springbank Primary Academy, Springbank Way GL51 OPH



Established nursery has a dynamic and experienced staff team providing the best possible care and learning environment. Term time only Mon-Fri 8:45am - 3:30pm. Competitive fees, funding for 2 Year Old (15 hours) and 3-4 year old (15 and 30 hours) and childcare vouchers accepted.

[admin@springbankpri-ac.gloucs.sch.uk](mailto:admin@springbankpri-ac.gloucs.sch.uk) / 01242 358016



## MY OHANA (at GLOSCOL)

Glos Coll, Banyard Close GL51 8PB

The nursery accepts children between one months and 5 years plus. Opening hours 8.30am-5.50pm Monday to Friday 01242 532016

[myohana.co.uk/childcare-settings-families/cheltenham-nursery/1](http://myohana.co.uk/childcare-settings-families/cheltenham-nursery/1)

# My Ohana



## HESTERS WAY CHILDREN and FAMILY CENTRE

**Dill Avenue GL51 OES**

This provider is able to accept the 2 3 & 4 year old funding provided by Gloucestershire County Council but only accepts children from the term after their 2nd birthday. The Centre offers support to young families through drop-in sessions; baby groups; home visits; childminding support group; speech and language therapy services; and also works in partnership with a range of agencies such as Citizen Advice, Adult Learning and Counselling. Please contact the centre for full details.



01242 222490 [admin@aspirefoundation.org.uk](mailto:admin@aspirefoundation.org.uk)

## ROWANFIELD CHILDREN'S CENTRE NURSERY

**Alstone Lane GL51 8HY**

essions are available for children aged from 2-4 years mornings and afternoons Monday to Friday during term time. We also offer Breakfast and Lunch club subject to demand. All children are eligible for 15 hours of funded Early Education from the term after their 3rd birthday. Some 3 & 4 year olds are also entitled to an extended entitlement of 30 hours a week.

01242 524584 [rowanfield@aspirefoundation.org](mailto:rowanfield@aspirefoundation.org) [www.aspirefoundation.org.uk](http://www.aspirefoundation.org.uk)

## INFANT / JUNIOR SCHOOLS



### GLOUCESTER ROAD PRIMARY

**Gloucester Road GL51 8PB**



Gloucester Road is a small, community school with a proud tradition of educating children since 1907. It has 131 children in 6 classes for 4 to 11 year olds.

01242 512792 [www.gloucesterroadprimary.co.uk](http://www.gloucesterroadprimary.co.uk)

[admin@gloucesterroad.gloucs.sch.uk](mailto:admin@gloucesterroad.gloucs.sch.uk)



### HESTERS WAY PRIMARY

**Dill Avenue, GL51 OES**

Hesters Way Primary is a small school in the heart of the community with large grounds, an extensive sports area and Forest School

01242 525616 [www.hestersway.gloucs.sch.uk](http://www.hestersway.gloucs.sch.uk)

[admin@hestersway.gloucs.sch.uk](mailto:admin@hestersway.gloucs.sch.uk)







## ROWANFIELD INFANT SCHOOL

**Alstone Lane GL51 8HY**

Part of the Gloucestershire Learning Alliance RIS has a 'Good' OFSTED grading. Dream, Drive, Duty and Dazzle is our mission statement that supports our children in achieving the best possible outcomes.

01242 515334 [admin@rowanfieldinfant.org.uk](mailto:admin@rowanfieldinfant.org.uk) [rowanfieldinfant.co.uk](http://rowanfieldinfant.co.uk)



## ROWANFIELD JUNIOR SCHOOL

**Alstone Lane GL51 8HY**

RJS is part of the Gloucestershire Learning Alliance in partnership with our infant school partner. 'Outstanding' OFSTED grading—for the 3rd consecutive year. Dream, Drive, Duty and Dazzle is our mission statement that supports our children in achieving the best possible outcomes.

01242 516611 [www.rowanfield-junior.gloucs.sch.uk](http://www.rowanfield-junior.gloucs.sch.uk) [admin@rowanfield-junior.gloucs.sch.uk](mailto:admin@rowanfield-junior.gloucs.sch.uk)



## ST THOMAS MORE CATHOLIC PRIMARY

**Lewis Road, GL51 OHZ**

St Thomas More is a Catholic Voluntary Aided Primary School that welcomes pupils of all faiths and abilities from Hesters Way, Springbank, St Mark's and parts of Benhall in Cheltenham. 01242 513339

[www.st-thomasmore.gloucs.sch.uk](http://www.st-thomasmore.gloucs.sch.uk) [admin@st-thomasmore.gloucs.sch.uk](mailto:admin@st-thomasmore.gloucs.sch.uk)



## SPRINGBANK PRIMARY ACADEMY

**Springbank Way GL51 OPH**

At SPA we believe that we can nurture skills and promote positive attitudes that enable happy children to meet the challenges of our rapidly changing world. SPA is part of the Gloucestershire Learning Alliance.

01242 527766 [www.springbankpri-ac.gloucs.sch.uk/](http://www.springbankpri-ac.gloucs.sch.uk/)  
[admin@springbankpri-ac.gloucs.sch.uk](mailto:admin@springbankpri-ac.gloucs.sch.uk)



## FAMILY SPACE

**Oasis Centre, Cassin Drive, PE Way, GL51 7SY**

Family Space offers time out for mums, stay and play, befrienders and a contact centre. Now part of YMCA Cheltenham

01242 580812 [us@FamilySpace.org.uk](mailto:us@FamilySpace.org.uk) [www.familyspace.org.uk](http://www.familyspace.org.uk)





# SECONDARY EDUCATION



## ALL SAINTS ACADEMY (ASA) Blaisdon Way, Cheltenham, GL51 0WH



All Saints' Academy opened in September 2011 and is a new-build Academy in Gloucestershire.

We are a church Academy for the whole community, welcoming those of all faiths and none. Sponsored by the Catholic Diocese of Clifton (until September 2020) and Anglican Diocese of Gloucester, both of which have a long history of involvement with education, the Academy offers 900 places for students aged 11-16 and 220 places for Sixth Form with academic & vocational courses for 16-19 year olds.

01242 711200 [www.asachelt.org](http://www.asachelt.org) [admin@asachelt.org](mailto:admin@asachelt.org)

## GLOUCESTERSHIRE COLLEGE Princess Elizabeth Way GL51 7SJ



GC is a career-focused college of professional and technical training, including award-winning apprenticeships, taught by industry experts.

Campus facilities include construction workshops, art studios, Cheltenham Fashion Academy, a hair and beauty salon, a commercial training restaurant, an on-site nursery and contemporary library.

[www.gloscol.ac.uk](http://www.gloscol.ac.uk) 0345 155 2020 [info@gloscol.ac.uk](mailto:info@gloscol.ac.uk)

gloucestershire college



## PATES GRAMMAR SCHOOL Princess Elizabeth Way, GL51 0HG

Pate's Grammar School is proud of its tradition of academic success, sporting and cultural achievement and outstanding pastoral care. Today's pupils maintain the highest academic standards while preparing to lead as responsible citizens in the world of tomorrow. Enjoyment of learning, consideration for others and opportunities for personal development lie at the heart of the school's ethos.

01242 523169 [office@patesgs.org](mailto:office@patesgs.org)  
[www.patesgs.org](http://www.patesgs.org)





# Youth Groups



Photo by [James Baldwin](#) on [Unsplash](#)



## AIR CADETS

TA Centre, Arle Road, GL51 8JU



The ATC is community-based and open to anyone aged between 13, or 12 if you are in year 8, and 20 years who is eligible (read full details in our section on joining the cadets). The ATC motto is 'Venture - Adventure' and our cadets know that it's more than just words - it's an attitude that helps you stand out from the crowd.



RAFAC-WHQ-Bristol-Glos-E2@mod.uk [www.raf.mod.uk/aircadets/](http://www.raf.mod.uk/aircadets/) 01242 233322



## ARLE DISTRICT GIRLGUIDING

St Barnabas Church Hall, Orchard Way, GL51 7AL

**RAINBOWS (5-7s)** Tues 4.30-5.30 pm, Mrs Wilson 07725 480430.

**BROWNIES (7-10s)** - Tuesday 6-7.30 pm, contact Tawny Owl via email [cheltenhambrownies16@live.co.uk](mailto:cheltenhambrownies16@live.co.uk). Wednesday 6-7.30 pm, contact Mrs Simpson 01242 235496.

**GUIDES (10 -14s)** - Wednesday 7-8.45 pm, contact Miss Hiley 07900 957736.

## ARMY CADETS

The Cadet Centre, Arle Road GL51 8JU



**ARMY CADETS**  
GOING FURTHER

With nearly 39,000 cadets (aged 12-18) the ACF is one of the country's largest voluntary youth organisations with thousands of enthusiastic and committed adult volunteers. No particular experience is required and we provide all necessary training. So if you can give up one or two evenings a week and want to do something different with your free time, this could be exactly what you are looking for.

[wx-glo-ao@rfca.org.uk](mailto:wx-glo-ao@rfca.org.uk) 01242 700063 ex 1 [www.armycadets.com](http://www.armycadets.com)



## 1st CHELTENHAM BOYS BRIGADE & GIRLS ASSOCIATION

Gas Green Baptist Church, Russell Street, GL51 9HE



**Friday 6.00 pm to 7.15 pm**

Anchor Section: 5 to 8 years old (Sch Years 1 to 3)

**Friday 6.45 pm to 9.30 pm**

Junior Section: 8 to 11 years old (School Years 4 to 6)

Company Section: 11 to 15 years old (School Years 7 to 10)

Senior Section: 15 to 18 years old (School Years 10 to 13)

01242 244594 [tonydymock@hotmail.com](mailto:tonydymock@hotmail.com) [www.1stcheltbb.org.uk](http://www.1stcheltbb.org.uk)





## 4th CHELTENHAM BOYS BRIGADE

### Hesters Way Baptist Church

**Mondays** 6-7.30pm Boys aged 11 - 18 yrs  
**Fridays** 6-7.30pm Boys aged 8-11yrs

### Hesters Way Primary School

**Tuesdays** 5.15- 6.45pm Boys aged 5-8 yrs.

Jacque Boyer 07775987949 [tonydymock@hotmail.com](mailto:tonydymock@hotmail.com)



## 41st CHELTENHAM SCOUT GROUP

### Scout Hut, Brooklyn Rd GL51 8DS

Offering "Skills for Life" for boys and girls from age 6-14

**Beavers** (age 6-8) 4:30pm-5:45pm Wed.

**Cubs** (age 8-10) 6pm-7:30pm Wed.

**Scouts** (age 10-14) 7pm-9pm Mon

[scouts@41st-cheltenham.org.uk](mailto:scouts@41st-cheltenham.org.uk)

[www.41st-cheltenham.org.uk](http://www.41st-cheltenham.org.uk)



**Scouts**  
 41st Cheltenham



## EMBRACE DISABILITY GROUP

### Whaddon Youth Centre, Dart Road, Whaddon GL52 5QW

The Embrace Disability Group is a fun packed youth club that runs on Monday nights from 6:30 to 8.30pm for young people with physical and learning disabilities. Activities include sports, arts and crafts, dance, Wii sports and much much more.



Debbie Etheridge 07774006106 Telephone 01242 242825  
[info.glos@prospects.co.uk](mailto:info.glos@prospects.co.uk) [debbie.etheridge@prospects.co.uk](mailto:debbie.etheridge@prospects.co.uk)

## THE ROCK, St Peter's Church, Tewkesbury Road, GL51 9AH



**The  
 ROCK**  
*Transforming Lives*

A safe and fun space for young people;

**Monday** Cooking Club 3.15pm Sch Yrs 1-6 / Space 51,7pm Sch Yrs 9-11

**Tuesday** TNT 6pm for Sch Yrs 6-8

**Wednesdays** Archery Club 6pm Sch Yrs 6-13

**Thursday** Scoot & Skate, 6pm for Sch Yrs 6-11

[hello@therock.uk.com](mailto:hello@therock.uk.com) [www.therock.uk.com](http://www.therock.uk.com) 01242 700700



**NON EMERGENCY CRIMESTOPPERS (anonymous) 0800 555111 101**



**St JOHN AMBULANCE**  
**St Mark Methodist Church Gloucester**  
**Road, GL51 8PX**

**St John**  
**Ambulance**



You'll be volunteering with Badgers (aged 7-10) or Cadets (aged 11-18) to support them to care for others, gain new experiences, and learn important life skills, including first aid. You'll have the chance to design your own role; running fun activities, such as outdoor events, summer camps, or providing more 'behind-the-scenes' support. You'll also have the chance to learn first aid. As well as, the opportunity to become a Youth Leader with the support and guidance from a friendly volunteer manager.

01452 858220 [south-west-volunteering@sja.org.uk](mailto:south-west-volunteering@sja.org.uk)



**SEA CADETS**

**Sea Cadet Centre, 75 Alstone Lane, GL51 8HH**

Whether it's becoming a trained instructor or just lending a helping hand, your help is always welcome! You don't need to have a background in the navy or in water sports, you just need to have a positive attitude! Find out what keeps us coming back for more by getting in contact with us:

Parade Night: Tue and Thu 1900-2130 Seniors and RMC; 1900-2100 Jun Cadets: SC, JUN, RMC Sea Cadets.

01242 580404 [admin@cheltsc.co.uk](mailto:admin@cheltsc.co.uk) [www.sea-cadets.org/cheltenham](http://www.sea-cadets.org/cheltenham)



**YOUTH SUPPORT TEAM (YST)**  
**Whaddon Youth Centre, Dart Road**

YST provide support for young people aged 10 - 19 years old (up to 25 if you have learning difficulties or a disability).

**Whaddon YST Centre** operates a youth club for young people with disabilities and also special project nights










Please visit [www.youthsupportteam.co.uk](http://www.youthsupportteam.co.uk) for more information or call/email us on 01242 01242 242825 / [info.glos@prospects.co.uk](mailto:info.glos@prospects.co.uk)

[twitter.com/glosyouth](https://twitter.com/glosyouth)  
[instagram.com/youthsupportteam/](https://www.instagram.com/youthsupportteam/)  
[facebook.com/gloucestershireyouthsupport](https://www.facebook.com/gloucestershireyouthsupport)



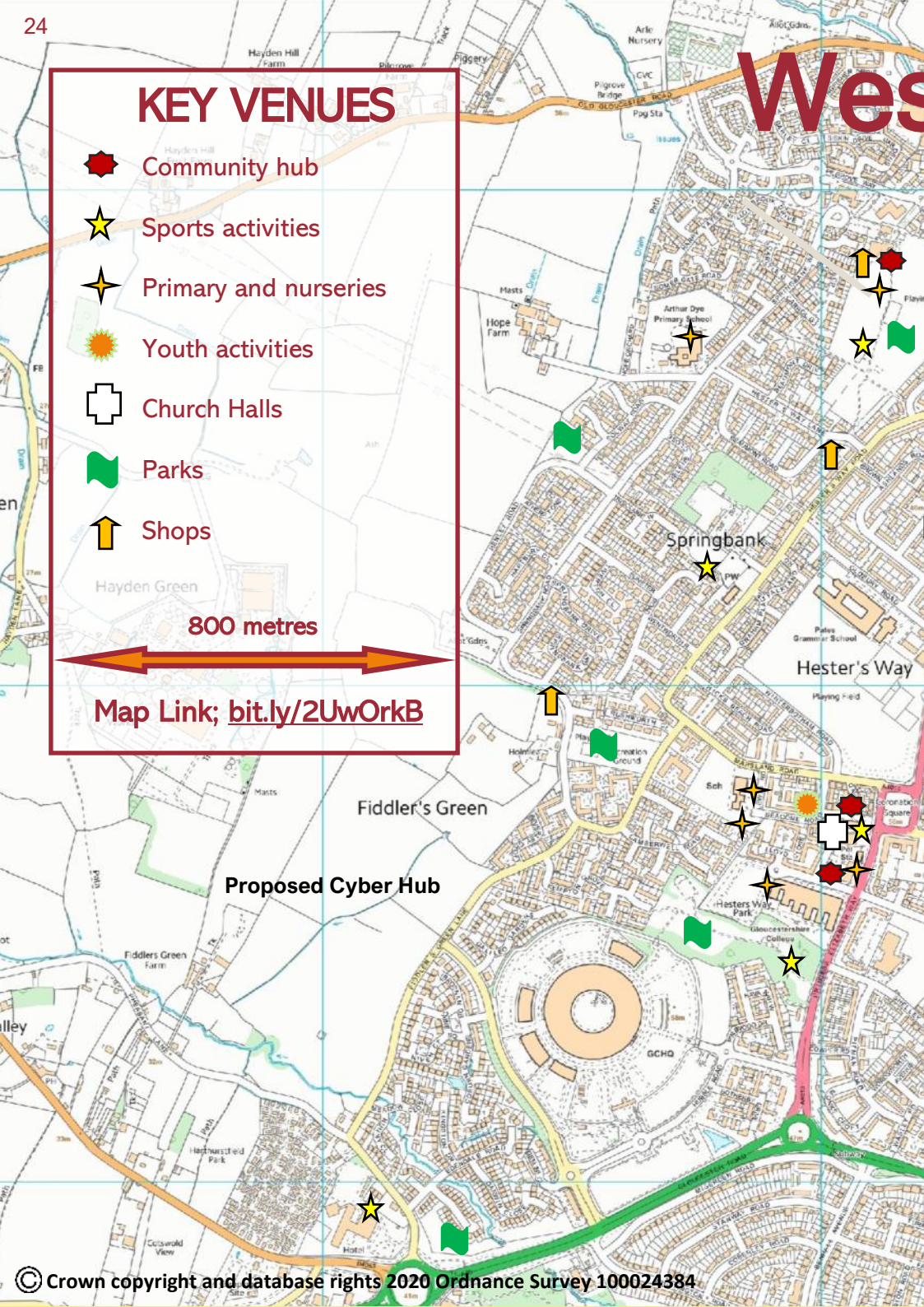


# KEY VENUES

-  Community hub
-  Sports activities
-  Primary and nurseries
-  Youth activities
-  Church Halls
-  Parks
-  Shops

800 metres

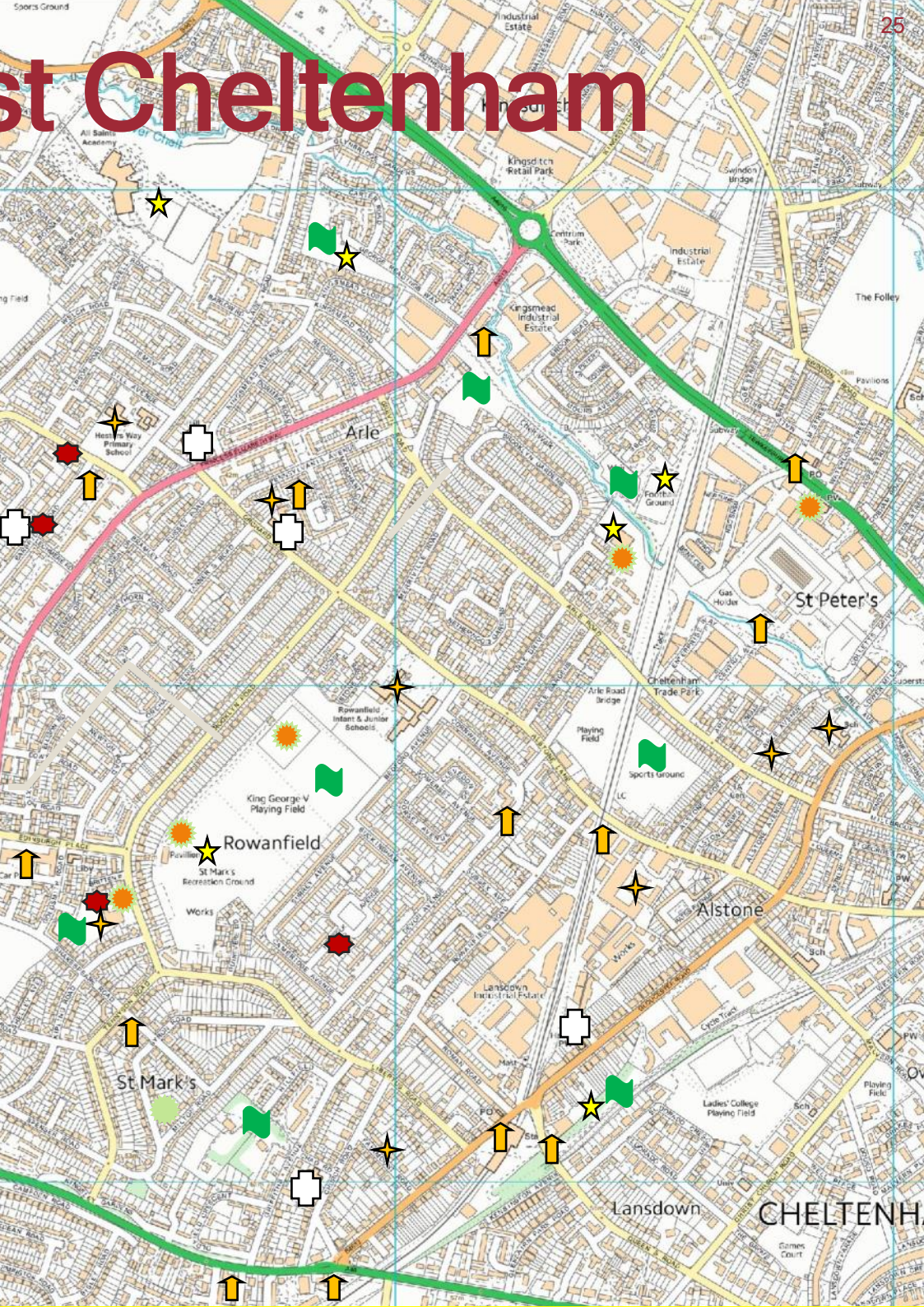
Map Link; [bit.ly/2UwOrkB](https://bit.ly/2UwOrkB)





# St Cheltenham

25





# Medical and Health







**WEST CHELTENHAM MEDICAL**  
**Hesters Way Community Centre,**  
**Cassin Drive, GL51 7SU**

Welcome to West Cheltenham Medical, we work between two sites, the main surgery being the Hesters Way site which is based at the address above and a branch surgery located in Springbank Way.

New patients are welcome

**Main Surgery opening :**

Monday to Friday  
 08:00-18:30



**SPRINGBANK DENTIST**  
**Springbank Community Centre,**  
**Springbank Way, GL51 OLG**

We provide NHS dental care for adults and children. If you wish to register with this practice, please contact our receptionist

**Dental Practice opening:**

Monday to Friday  
 8.45-13.00 and 14.00- 17.00

**Emergency Service by appointment only:**

Saturday, Sunday Bank Holiday 9.00 -15.00

**01242 507111 (Doctor) or email via website**

**0300 421 6435 (Dentist) [springbankdental@ghc.nhs.uk](mailto:springbankdental@ghc.nhs.uk)**

**Out of hours NHS 111**

**[www.inspire-healthcare.co.uk/west-cheltenham-medical/](http://www.inspire-healthcare.co.uk/west-cheltenham-medical/)**



**LOCAL PHARMACIES / DENTISTS / OPTICIANS**

Lloyds Pharmacy, <b>Coronation Square, Hesters Way</b>	01242 516 623
Martin's Pharmacy, <b>Tennyson Road, St Marks</b>	01242 512 333
Cheltenham Pharmacy, <b>Springbank Community Centre</b>	01242 255 061
Coronation Square Dental Practice, <b>Edinburgh Place</b>	01242 523 573
Scrivens Opticians, <b>Edinburgh Place</b>	01242 235 220





A surrealist painting of a woman's face, rendered in a style reminiscent of Marc Chagall. The face is composed of various shades of pink, purple, and blue, with a large, multi-petaled pink flower growing from the forehead. A small, dark bird is perched on the bridge of the nose. The background is a vibrant mix of colors, including red, orange, and blue, with a rainbow-like arc visible on the right side. The overall composition is dynamic and expressive, with bold lines and a rich color palette.

# Venues and Churches



## BETHANY GOSPEL CHAPEL

52 Newton Road, GL51 7QY

Opened in 1960 the hall is home to a non denominational church group. Full details available on the website listed below.

Duncan Conway at 01242 692328  
[duncanconway@blueyonder.co.uk](mailto:duncanconway@blueyonder.co.uk)



## GET LISTED!

To be listed in the West Cheltenham Directory please contact us on

01242 575638 [andyhayes@hwpartnership.org.uk](mailto:andyhayes@hwpartnership.org.uk)

To see the directory online <http://westcheltenham.org/directory>

**FIX MY STREET**—the quick and easy way to fix a problem on your street



[www.fixmystreet.com](http://www.fixmystreet.com)

Report, view, or discuss local problems (like graffiti, fly tipping, broken paving slabs, potholes or Street lighting) Results are quick and there's a feedback report too!

Enter a nearby UK postcode, or street name and area and follow the instructions. Don't forget a picture is worth a thousand words!



## HESTERS WAY BAPTIST CHURCH

Ashlands Road, GL51 0DH

Founded in 1957 Sponsored by Cambray and Salem Baptist Churches the church is active and welcoming and offers Sunday services, courses and community activities including "Open the book" and "stay and play" on behalf of Family Space. Also coffee mornings on 2<sup>nd</sup> & 4<sup>th</sup> Friday of the month at 10am.

01242 580923  
[secretary@hestersway.org](mailto:secretary@hestersway.org)  
[www.hestersway.org.uk](http://www.hestersway.org.uk)





## HESTERS WAY COMMUNITY RESOURCE CENTRE

Cassin Drive, Hesters Way GL51 7SU



A hub at the heart of West Cheltenham the Community Centre offers services for everyone including FREE weekly Job Club / Digital Den / adult Education courses —IT Drop In Classes, and public access computers, plus meeting rooms for hire.



Also the centre has offices for West Cheltenham Partnership, Café, Puddles Nursery, Cheltenham Borough Homes, West Cheltenham Surgery, Listening Post, Andrew Bird Hearing, Head to Toe and Dial-a-Cab, Brighter Homecare,



The West Cheltenham Community Pantry is also in the building

01242 575638 [andyhayes@hwpartnership.org.uk](mailto:andyhayes@hwpartnership.org.uk) [westcheltenham.org/resource-centres](http://westcheltenham.org/resource-centres)

## GET LISTED!

To be listed in the West Cheltenham Directory please contact us on

01242 575638 [andyhayes@hwpartnership.org.uk](mailto:andyhayes@hwpartnership.org.uk)

To see the directory online <http://westcheltenham.org/directory>

## St AIDAN & St SILAS @ OASIS

Coronation Square, GL51 7SY

A small friendly, fun feel urban community church and part of the West Cheltenham Parish. Service Sundays at 10.30am. See the weekly Sunday Notice / News sheets on the website. It hosts Family Space, an agency supporting families through: parent & toddler groups, Time Out for Mums, activity days and the Cheltenham Contact Centre for separated and divorced families.



01242 580022

[www.westchelt.org.uk/stasts](http://www.westchelt.org.uk/stasts)



**St Aidan & St Silas Church**  
West Cheltenham





## St BARNABAS CHURCH

Orchard Way, GL51 7JY

Part of the West Cheltenham Parish the church was established in 1946. The site includes a community hall offering a playgroup, young people's activities and meeting space.

01242 580022

[www.westchelt.org.uk/stbarnabas](http://www.westchelt.org.uk/stbarnabas)



**St Barnabas Church**  
West Cheltenham



## St MARK CHURCH

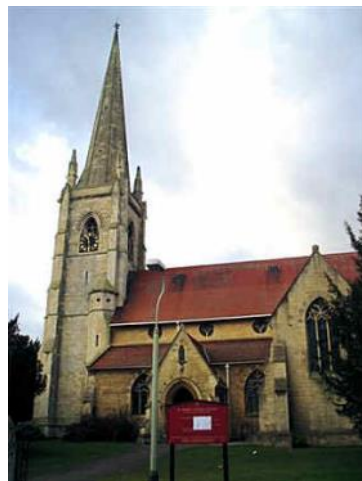
Church Road, GL51 7AL

The oldest of the 3 churches that comprise the West Cheltenham Parish, St Mark offers plenty of activities for church goers and the wider community including events, courses and social activities for all ages as well as Sunday services.

If you're moving into the area, thinking about getting married or you're curious about Christianity or the church, we do hope you find what you're looking for quickly and easily. Do come along soon so we can meet face to face. We are part of the West Cheltenham Parish and are in the Diocese of Gloucester. The Parish office is at Oasis Cheltenham in Cassin Drive..

01242 580022

[www.westchelt.org.uk/stmarks](http://www.westchelt.org.uk/stmarks)



**St Mark's Church**  
West Cheltenham

## St MARK's METHODIST CHURCH

Gloucester Road, GL51 8PX

On Sundays we offer family services and 'Sparx' (activities for children) at 10.30am, and a quiet evening service at 6.30pm. We have a choir, a music group, art groups, a Tuesday coffee morning offering free drinks and cake, a Wednesday Toddler group, a Friday club for the elderly, fellowship groups and house groups.

The hall can be hired for activities on  
01242 583613



email: [stewards@stmarksmethodist.org.uk](mailto:stewards@stmarksmethodist.org.uk) [www.stmarksmethodist.org.uk](http://www.stmarksmethodist.org.uk)



## St MARKS and HESTERS WAY COMMUNITY CENTRE

**Brooklyn Road GL51 8DS**



The Centre offers rooms for hire and is the host of the St Marks and Hesters Way Community Association which provides a bar, snooker room and social activities for members and a lunch club. The building also houses the St Marks and Hesters Way Playgroup. On site is the 41st Cheltenham Scout Group.

01242 690025 (Office) 690026 (Bar)

[office@smhwcc.co.uk](mailto:office@smhwcc.co.uk) [www.smhwcc.co.uk](http://www.smhwcc.co.uk)



## St THOMAS MORE CATHOLIC CENTRE

**Princess Elizabeth Way, GL51 7RA**

Affiliated to St Gregory's Church this welcoming Catholic centre offers a Saturday Breakfast, bingo and events evenings.

01242 573128 / 523737

[www.stthomasmorechurch.org.uk](http://www.stthomasmorechurch.org.uk)

<https://cliftondiocese.com/cheltenham-deanery/>



## SPRINGBANK COMMUNITY RESOURCE CENTRE

**Springbank Way GL51 OLG**

The resource centre offers office space, a community hall and community garden and meeting rooms and is home for various organisations including;

Giggles Nursery, District Nurses, West Cheltenham Dentist, Cheltenham Pharmacy and Gloucestershire Health Care Services and the Chinese Children and Families Association.

01242 575638

[adrian@hwpartnership.org.uk](mailto:adrian@hwpartnership.org.uk) [westcheltenham.org/resource-centres](http://westcheltenham.org/resource-centres)







**Local Gems**





## AGE UK Edinburgh Place

Donate, volunteer, support...Age UK have something for everyone, with a wide range of clothing, accessories, books, homeware and new goods.



[ageuk.org.uk/services/charity-shops/](http://ageuk.org.uk/services/charity-shops/) 01242 237003



## TERRY ASHDOWN ALLOTMENTS Henley Road, Springbank



Situated on the edge of Springbank and bordering farmers' fields. The Terry Ashdown site has 43 plots and is a well maintained and well used site.

## HAYDEN ROAD ALLOTMENTS Old Gloucester Road

Situated between the old Arle Nursery site and Cheltenham Fencing. The site has 177 plots and has a strong community feel. To apply please call the allotments officer—a waiting list may apply.  
[allotments@cheltenham.gov.uk](mailto:allotments@cheltenham.gov.uk) 01242 262626.



## ANIMAL SHELTER Gardner's Lane, GL51 9JW

Gloucestershire Animal Welfare Association and Cheltenham Animal Shelter rescue and re-home unwanted and abandoned stray cats, dogs and small animals from across Gloucestershire.

01242 523521 [reception@gawa.org.uk](mailto:reception@gawa.org.uk) [www.gawa.org.uk](http://www.gawa.org.uk)



## ASTON PROJECT Various local venues



Youth time banking project in which young people exchange points earned from community projects for fun activities.

01452 907252 or 01452 907248

[astonproject@gloucestershire.pnn.police.uk](mailto:astonproject@gloucestershire.pnn.police.uk) [www.astonproject.co.uk](http://www.astonproject.co.uk)



## BRIDGE FOOTBALL ACADEMY

63 Bridgekeepers Way, Hardwicke, Glos,  
GL2 4BD



Bridge Football Academy was founded to help talented young footballers across Gloucestershire achieve their goals of getting signed to Professional clubs. We provide high level coaching, a challenging games programme and a positive welcoming environment for players to train and develop in.

[admin@bridgeyouthservices.com](mailto:admin@bridgeyouthservices.com) 07754466939

[www.bridgefootballacademy.co.uk](http://www.bridgefootballacademy.co.uk) -

Twitter:@bridgefootball9 Instagram:bridgefootballacademy19 Fb BridgeFootballAcademy



## BRITISH HEART FOUNDATION HOME STORE

32/40 Edinburgh Place , Coronation Square, GL51 7SA

Do you need a new sofa or bed? Fancy a new look in your dining room? Our Furniture & Electrical stores sell quality items at great prices. Why not stop by your local store today and find a bargain?

Mon—Fri 9am—5pm / Sat 10am—4pm 01242 858900  
[www.bhf.org.uk](http://www.bhf.org.uk)



## BROMFORD

Cheltenham

Bromford is a housing association providing affordable homes to rent and buy across Cheltenham. Services are delivered locally by our team of neighbourhood coaches – find your local coach at [www.bromford.co.uk/neighbourhoodcoach](http://www.bromford.co.uk/neighbourhoodcoach)

0330 1234 034 [www.bromford.co.uk](http://www.bromford.co.uk) Twitter: @Bromford Facebook: thisisbromford

# Bromford.

## CARING for COMMUNITIES and PEOPLE (CCP)

Cheltenham 1st Stop, 301-305  
High Street, GL50 3HW

Services to help children, young people, families and vulnerable adults include Advocacy, Appropriate Adult, Cheltenham 1st Stop Advice and Inclusion, Community and Family Services, Foyer Projects, Hamper Scamper, Community Pantry, Community Connectors and Studio 340

[www.ccp.org.uk](http://www.ccp.org.uk) 0300 365 8999 or 01242 228 999





## CORONATION CAFE

Gresham Court, Princess Elizabeth Way, GL51 7SQ

Have a slap up meal at this popular local cafe situated in Coronation Square. Anita is still taking your orders! 01242 700017. Mon/Sat 7.30am—3pm Sun till 8.30am—2pm



## CHELTEMHAM BOROUGH HOMES (CBH)

Hesters Way Community Resource Centre, GL51 7SU.

Cheltenham Borough Homes offers services to residents, and non-residents, across Cheltenham. West Cheltenham benefits from;

**Job Clubs** weekly on a Monday and a Wednesday morning from the Hesters Way Community Centre for job search, CVs, and employment and training advice.

**Wallace House Hub**, Windermere Road, the activities coordinator offers a timetable of activities for older adults including crafts and exercise.

**Community Investment Officers** in Springbank, Hester Way, St Marks, and Rowanfield deliver community based activities and events.

**Inclusion and Ability Hub** with Inclusion Gloucestershire offers new skills, socialising, sport & physical activity, arts and crafts, carers/ support to access the hub welcome.

**Repair Cafes** with Inclusion Gloucestershire offers new skills, socialising, sport & physical activity, arts and crafts, carers/support to access the hub welcome.

[Communityinvolvement@cbh.org](mailto:Communityinvolvement@cbh.org) Free phone 0800 408 0000  
[www.cbh.org](http://www.cbh.org)



## CHELTEMHAM ROTARY

Jury's Inn, Cheltenham GL51 OTS

Cheltenham Rotary. Your local Rotary Club. We are engaging, compassionate, inclusive and ambitious, and we have a great social life .... and YOU could be part of this. We meet twice a month at Jury's Inn. See our website for more information.

[www.cheltenhamrotary.org.uk](http://www.cheltenhamrotary.org.uk)



## CHINESE CHILDREN AND FAMILIES ASSOCIATION

Springbank Community Centre, GL51 OLG

The Mandarin Centre was launched in 2007 and is a place open to people from all walks of life who are interested in Chinese culture and language. Resources include Mandarin Library, tai chi, events and courses. 07720 637976 [mandarin.school@hotmail.co.uk](mailto:mandarin.school@hotmail.co.uk)





**DEFIBRILLATORS** can be found at;



**LOCAL VENUES 24/7** including **Dulverton Court**  
**Hesters Way Community Resource Centre /**  
**Monkscroft Care / Springbank Community Group**  
**Whittington House Nursing Home / Varied times Gloucestershire**

**College**

Public Hearts have sponsored and promoted public defibrillators at the buildings above in our local community. To find one near you visit [Defib finder – find the defibrillators nearest you.](#)



**GLOUCESTERSHIRE  
 RURAL COMMUNITY  
 COUNCIL (GRCC)**



**Community  
 Action in  
 Gloucestershire**

**Community Resource Centre, Grove Street, GL50 3LZ**

GRCC makes a difference by strengthening voluntary & community action; provides specialist training, advice, information and support to voluntary & community groups of all shapes and sizes – from those in their early stages of development to large national charities. They also work with housing associations, schools and social enterprises.

01242 227737 [angelag@grcc.org.uk](mailto:angelag@grcc.org.uk) [www.grcc.org.uk](http://www.grcc.org.uk)



**GCHQ**  
**Hubble Road GL51 0EX**



GCHQ is an intelligence, security and cyber agency with a mission to help keep the UK safe. Its people use cutting-edge technology, technical ingenuity and world leading partnerships to identify, analyse and disrupt threats in an increasingly complex world. GCHQ works closely with MI5, the Secret Intelligence Service (MI6), law enforcement, the military and international partners to counter real-world and online threats from nation states, criminal groups, terrorists and individuals.

The National Cyber Security Centre (NCSC), which is part of GCHQ and was set up in October 2016, leads the cyber security mission to make the UK the safest place to live.



**GUINNESS PARTNERSHIP**  
**30 Brock Street, Regents**  
**Place, London, SW1 3FG**



The Guinness Partnership is an affordable housing provider that builds, rents, sells and manages high quality homes in your community.



## HESTERS WAY LIBRARY

**Goldsmith Rd, Coronation Square, GL51 7RT**

The Hesters Way Library offers not just books and IT (job search and printing) but also Toddler Time, Baby Bounce and Rhyme, Lego Club and Library Club. Transport to the library is also available on request.



### Opening Times

Monday 1 – 5pm Tuesday 10am – 6pm

Wednesday 10am – 1pm

Thursday CLOSED Friday 2pm – 5pm Saturday 10am – 1pm Contact 01242 514969



## HESTERS WAY NEIGHBOURHOOD PROJECT CHARITY SHOP

**16-18 Hesters Way Rd GL51 ODA**

An Aladdin's cave of DVDs, videos, toys, clothing, books, bric-a-brac and much more, BARGAINS GALORE !! DONATIONS WELCOME ! Takings support the Hesters Way Neighbourhood Project

Open Tuesday to Friday 9am – 3pm

01242 252325 [finance@hwnp.org](mailto:finance@hwnp.org) [www.hwnp.org](http://www.hwnp.org)



## LILLIAN FAITHFUL HOMES

**Secret Garden and Royal Garden Day Care Hubs**

Our hubs provide flexible individually tailored day care in Gloucestershire and a Dementia meeting centre.. For companionship of others, to make new

friends, and support for those living with Dementia and related conditions.

[www.lilianfaithfull.co.uk/](http://www.lilianfaithfull.co.uk/) [RGMC@lilianfaithfull.co.uk](mailto:RGMC@lilianfaithfull.co.uk) 01242 500414



## LISTENING POST

**Hesters Way Community Resource Centre, Cassin Drive, GL51 7SU**

Listening Post offers counselling to adults suffering from emotional distress, a relationship break down, the stress of work, bereavement, and wounds from much earlier in life resurfacing.

01242 256060

[lp@cheltenham@listeningpost.org.uk](mailto:lp@cheltenham@listeningpost.org.uk) [www.listeningpost.org.uk](http://www.listeningpost.org.uk)







## MONKSCROFT CARE HOME

**Shelley Road GL51 7DP**

Rated Outstanding by CQC, Monkscroft Care Centre is offers compassionate, individualised, person-centred care for up to 80 residents. Managed by The Orders of St John Care Trust, we believe that our residents should enjoy life in an atmosphere of warmth and understanding and are cared for by people who respect their dignity and freedom of choice.

0800 988 8133

[enquiries@osjct.co.uk](mailto:enquiries@osjct.co.uk) [www.osjct.co.uk/care-home/monkscroft-care-centre](http://www.osjct.co.uk/care-home/monkscroft-care-centre)



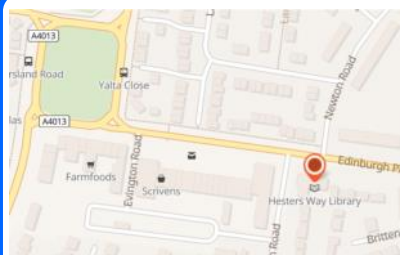
## MONKSCROFT PASTORAL CARE

**Goldsmith Close, GL51 7RT**

MPC support children (and their families) who are experiencing social, emotional or behavioral difficulties either at school or at home.

01242 256599

[jo.cannon@mpcp.org.uk](mailto:jo.cannon@mpcp.org.uk)



## NEIGHBOURHOOD WATCH ASSOCIATION

Formed in 1999 the NWA aims to prevent crime through promoting vigilance, home security and stronger communities. For information about how to set up a scheme on your street contact the chair Tony Pierce.

[tpierce@blueyonder.co.uk](mailto:tpierce@blueyonder.co.uk)

[sites.google.com/site/cheltenhamhwa/welcome](https://sites.google.com/site/cheltenhamhwa/welcome)



**P3**

**Montrose House, Wellington Street, GL50 1XY**

A community-based housing-related support service promoting independent living and encouraging people to build on their existing strengths. Can also offer a wide range of support including: maximising benefits, staying independent, dealing with debts, accessing community groups, education and training.

[cheltenhamcbs@p3charity.org](mailto:cheltenhamcbs@p3charity.org) [www.p3charity.org](http://www.p3charity.org)

0808 1682443







## POLICE RECEPTION

**Hesters Way Police Station, Princess Elizabeth Way GL51 7JS**

(Appointments only — call 01452 753241 )

## NEIGHBOURHOOD POLICING TEAM

**Holland House, Lansdown Road GL51 6QH**

Managed by a local Sergeant and supported by a PC the West Cheltenham area is divided into the 3 districts of Hester's Way, Springbank and Fiddlers Green and St Marks. The team also comprises two numerous PCSOs providing a community presence across the area.

**999** in an emergency **101** non emergency **0800 555111**  
Crimestoppers



## REAL LIFE COACHING INTERNATIONAL

**9 Court Orchard, Wotton under Edge, Glos, GL12 7JB**

RLCI uses a unique 'heart based' approach to teaching life coaching skills providing two programmes - the **Positive Change For Life** course (PCFL) and the **Who Am I? (WAI)** workshops developed through practical experience to help people with their real-life problems and challenges.

Contact Mark Griffiths 07875945517

## RECLAIM

**Unit 25b Lansdown Industrial Estate,  
Gloucester Rd GL51 8PL**

Reclaim sell quality used furniture and household items including paint. Voluntary placements available offering support and guidance; learn skills, gain experience and develop confidence in a safe working environment.

01242 228 823 [reclaim@vision21.org.uk](mailto:reclaim@vision21.org.uk)

[www.vision21.org.uk](http://www.vision21.org.uk)



## READ EASY

**LOCAL VENUES including Hesters Way**



**Read Easy**

Helping adults learn to read

Read Easy groups are self-financing and work across Cheltenham and Gloucester. If you would like to support our work directly, or to book a FREE session see the website;

[www.readeasy.org.uk/groups/cheltenhamandgloucester/](http://www.readeasy.org.uk/groups/cheltenhamandgloucester/)



**Call 01242 575638**

**TO GET YOUR COMPANY OR CHARITY LISTED FREE**



## POST OFFICES

**Hesters Way Road** 8-10, Hesters Way Rd, GL51 0DA 01242 523073

**High Street** WHSmith, High Street, GL50 1EP 01242 584086



## SAHARA SAHELI

Sahara Saheli (meaning Supportive Friends) is a multicultural group for women living and working in Cheltenham with the aim of reducing isolation, building confidence and engagement with public services.

Sarah West 01242 692112 [office.cwep@gmail.com](mailto:office.cwep@gmail.com)

## SLIMMING WORLD with CLAIRE

**St Marks Community Centre, Brooklyn Road**  
**GL51 8DS** Tuesdays PM

**The Rock St Peter's Church, Tewkesbury Road,**  
**GL51 9AH** Saturday AM

Call/text Claire to book  
on: 07909139996



## SPRINGBANK COMMUNITY GROUP CAFÉ AND PANTRY

**Ron Smiths Pavilion, Springbank Way GL51 0LH**



# THE PANTRY

Springbank Community Group CiC set up in March 2020 in response to the Covid pandemic runs the Springbank Food Pantry and Cafe and is delivering open access Youth Work provision in parts of Cheltenham. For more information, to join the pantry or receive a parcel please contact

[www.facebook.com/springbankCG](https://www.facebook.com/springbankCG)



## SPRINGFIELD HOUSE

**Pilgrove Way GL51 0WA**

26 retirement flats managed by Riverside with lift, lounge, laundry, guest facilities, garden, activities room and a hairdressing salon.

[www.riverside.org.uk](http://www.riverside.org.uk)

01242 574245





**SUE RYDER****86 Edinburgh Place, Cheltenham GL51 7SE***Sue Ryder*

Sue Ryder shops are places you can bring items you no longer need. We take furniture, clothing, books, DVDs, electrical items, other household objects and bric-a-brac. For smaller items like clothes, please drop in your items to your nearest shop. All profits go straight to support our palliative, neurological and bereavement support across the UK.

[edinburghplace4040@sueryder.org](mailto:edinburghplace4040@sueryder.org) 01242 222 518 [www.sueryder.org/support-us/shop-with-us/our-shops/edinburgh-place-cheltenham](http://www.sueryder.org/support-us/shop-with-us/our-shops/edinburgh-place-cheltenham)

**TOWNSWOMENS GUILD (ARLE)****Laxton Room, St Barnabas Church, Orchard Way, GL51 0DH**

Meetings on 3rd Monday of each month at 7.30pm Monthly scrabble and speaker evenings, weekly art group plus tea coffee and biscuits.

[www.the-tg.com](http://www.the-tg.com) Amanda Greenway 07725145819

**UNIQUE SENIOR CARE****92 Edinburgh Place, Hesters Way GL51 7SE**

Unique Senior Care (USC) provides outstanding home care and live-in care services to support people who would like to continue to live in the comfort of their own homes, for as long as possible.

**Unique**  
Senior Care

USC is recognised by the Care Quality Commission (CQC), with a team of friendly, professional and empathetic Caregivers, who are dedicated to providing outstanding care, from as little as one hour a week to 24 hours a day, seven days a week live-in care. USC offer support with personal care, mobility, medications, housekeeping, transportation, companionship and cooking.

01242 279659 Email: [info@uniquecare.co.uk](mailto:info@uniquecare.co.uk) [www.uniquecare.co.uk](http://www.uniquecare.co.uk)

**VISION 21****1st Stop, 301—305, High Street GL50 3HW**

Vision 21 is an independent sustainability charity focused on social and environmental issues in Gloucestershire. It runs Reclaim, the Repair Café, Lansdown Community Composting, Annecy Garden and more!

01242 224321 [www.vision21.org.uk](http://www.vision21.org.uk) @vision21







## GO VOLUNTEER GLOS

Valiant Court, Delta Way, Brockworth, Gloucester  
Business Park, Gloucester GL3 4FE, UK

**Looking to Volunteer?** Using Go Volunteer Glos is the simplest way to find the widest range of local volunteering opportunities in the county all in one place. No matter what your interest is – anything from dog walking for an elderly person to creating a new community garden to fundraising - there should be something here for you. As the world of volunteering continues to grow, there are even opportunities for people who want or need to volunteer from home

[govolunteerglos.org](http://govolunteerglos.org) [emma@govolunteerglos.org](mailto:emma@govolunteerglos.org)



## WEST CHELTENHAM PARTNERSHIP (WCP)

Hesters Way Community Resource  
Centre, Cassin Drive, GL51 7SU



Set up in 1997 Hesters Way Partnership is dedicated to making Hesters Way, St Marks, Rowanfield, Fiddlers Green and Springbank a better place to live, work and enjoy. WCP manages the two resource centres at Hesters Way and Springbank and the adjacent Multi Use Games Area and the West Cheltenham Pantry. It also runs action groups for young people, community safety, offers networking opportunities, community development and environmental projects, provides funding support, runs the Dreamscheme at local primary schools and produces Viewpoint magazine.

[andyhayes@hwpartnership.org.uk](mailto:andyhayes@hwpartnership.org.uk) 01242 575638 [www.westcheltenham.org](http://www.westcheltenham.org)  
[www.westcheltenhampantry.org.uk](http://www.westcheltenhampantry.org.uk)

## The WEST CHELTENHAM COMMUNITY PANTRY Hesters Way Community Centre, Cheltenham GL51 0LG

The West Cheltenham Community Pantry was set up to support individuals and families in the local community who are struggling to pay for their weekly shop. The pantry is a membership scheme which will offer donated and in-date waste food to members who will pay a weekly fee of £3.50 and be able to shop for approximately £15 worth of tinned, packet and fresh food plus household items.

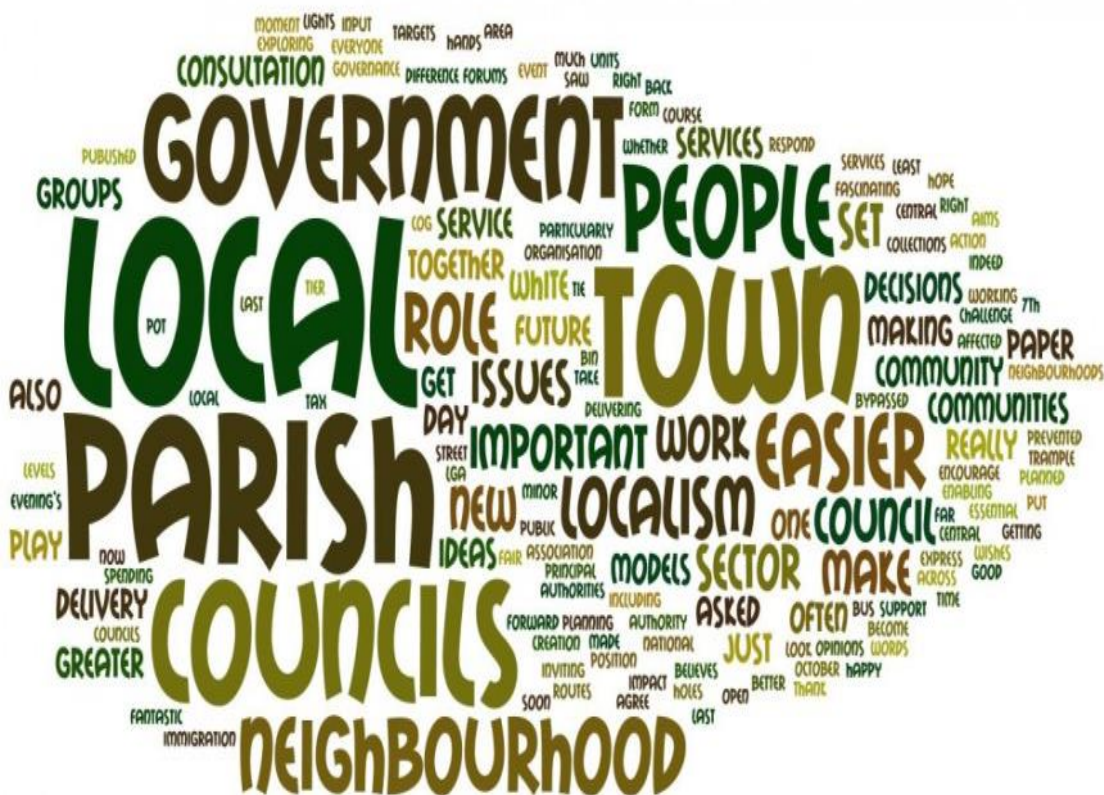
Members can access benefits and debt advice and mental health support.

[info@westcheltenhampantry.org](mailto:info@westcheltenhampantry.org) 07483 125289  
[www.westcheltenhampantry.org](http://www.westcheltenhampantry.org)





# Local Government



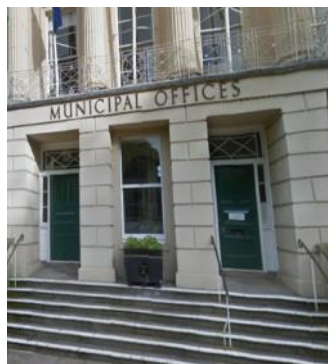


## CHELTENHAM BOROUGH COUNCIL

Municipal Offices, Prom', Cheltenham GL50 9SA

### Municipal Offices

Housing Benefit	01242 262626
Benefit Take Up	01242 264341
Homelessness and Housing Team	01242 775170
Council tax enquiries	01242 775168
Bus Ticket Concessions	01242 264161
Elections / registering to vote	01242 264218
Green Environment and Allotments	01242 264132
Environmental health	01242 250019
Refuse collection and Recycling	01242 264204
Bulky items collection	01242 264244
Abandoned cars	01242 264244
Cleansing	01242 774667
Dog warden	01242 264244
Lifeline alarms	01242 775016
	01242 264393



01242 262626  
[www.cheltenham.gov.uk](http://www.cheltenham.gov.uk)

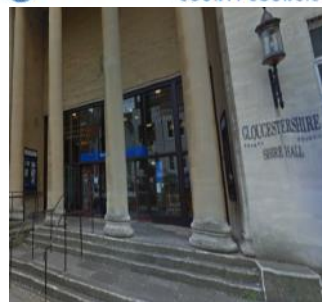
### CHELTENHAM BOROUGH COUNCILLORS

Simon Wheeler (Lib Dem) Hesters Way;	01242 230827
Wendy Flynn (Lib Dem) Hesters Way;	01242 224928
Pete Jeffries (Lib Dem) Springbank;	07717 493686
Suzanne Williams (Lib Dem) Springbank;	01242 230648
Richard Pineger (Lib Dem) St Marks;	07988 024241
Sandra Holliday (Lib Dem) St Marks;	01242 700434
David Willingham (Lib Dem) St Peters;	07421 766280
Victoria Atherstone (Lib Dem) St Peters;	07549 558777

## GLOUCESTERSHIRE COUNTY COUNCIL

Shire Hall, Westgate Street, Gloucester GL1 2TG

Schools and Learning  
 Libraries and Archives  
 Travel  
 Highways, Roads and Parking  
 Births, Marriages and Deaths  
 Health and Social Care  
 Youth Services



01452 425 000  
[www.gloucestershire.gov.uk](http://www.gloucestershire.gov.uk)

### GLOUCESTERSHIRE COUNTY COUNCILLORS

Suzanne Williams (Lib Dem) Hesters Way and Springbank;	01242 230648
Simon Wheeler (Lib Dem) Benhall, The Reddings & Up Hatherley	01242 230827
David Willingham (Lib Dem) St Peters & St Marks	07421 766280

## CHELTENHAM MEMBER OF PARLIAMENT

Alex Chalk 01242 210473 [alex@alexchalk.com](mailto:alex@alexchalk.com)





# INDEX

- 
- |   |  |
|---|--|
| <b>21</b> 1st CHELTENHAM BOYS BRIGADE & GIRLS ASSOCIATION | <b>12</b> COMBINED DEFENSIVE ARTS                        |
| <b>22</b> 4th CHELTENHAM BOYS BRIGADE                     | <b>35</b> CORONATION CAFE                                |
| <b>22</b> 41st CHELTENHAM SCOUT GROUP                     | <b>27</b> DENTISTS / DOCTORS                             |
| <b>34</b> AGE UK  | <b>37</b> ELEVENZ CAFE                                   |
| <b>21</b> AIR CADETS                                      | <b>22</b> EMBRACE DISABILITY GROUP                       |
| <b>19</b> ALL SAINTS' ACADEMY (ASA)                       | <b>18</b> FAMILY SPACE                                   |
| <b>9</b> ALL SAINTS' ACADEMY SPORTS CENTRE                | <b>5</b> FIDDLERS GREEN PARK                             |
| <b>34</b> ALLOTMENTS; HAYDEN ROAD                         | <b>12</b> FINTAN FC                                      |
| <b>34</b> ALLOTMENTS; TERRY ASHDOWN                       | <b>29</b> FIX MY STREET                                  |
| <b>7</b> ALSTONE CROFT PARK                               | <b>37</b> GCHQ   |
| <b>34</b> ANIMAL SHELTER                                  | <b>5</b> GEORGE READINGS PARK                            |
| <b>21</b> ARLE DISTRICT GIRLGUIDING                       | <b>15</b> GIGGLES NURSERY                                |
| <b>21</b> ARMY CADETS                                     | <b>15</b> GLOUCESTER ROAD PRE SCHOOL                     |
| <b>34</b> ASTON PROJECT                                   | <b>17</b> GLOUCESTER ROAD PRIMARY                        |
| <b>29</b> BETHANY GOSPEL CHAPEL                           | <b>19</b> GLOUCESTERSHIRE COLLEGE                        |
| <b>35</b> BRIDGE FOOTBALL ACADEMY                         | <b>37</b> GLOUCESTERSHIRE RURAL COMMUNITY COUNCIL (GRCC) |
| <b>35</b> BRITISH HEART FOUNDATION                        | <b>5</b> GRIFFITHS AVENUE NATURE RESERVE                 |
| <b>35</b> BROMFORD  | <b>37</b> GUINNESS PARTNERSHIP                           |
| <b>35</b> CARING for COMMUNITIES and PEOPLE (CCP)         | <b>7</b> HENLEY ROAD OPEN SPACE                          |
| <b>35</b> CARMELLOES                                      | <b>29</b> HESTERS WAY BAPTIST CHURCH                     |
| <b>5</b> CHELT WALK PARK                                  | <b>17</b> HESTERS WAY CHILDREN'S CENTRE                  |
| <b>36</b> CHELTENHAM BOROUGH HOMES (CBH)                  | <b>30</b> HESTERS WAY COMMUNITY CENTRE                   |
| <b>11</b> CHELTENHAM BOXING ACADEMY                       | <b>37</b> HESTERS WAY LIBRARY                            |
| <b>36</b> CHELTENHAM SCIENCE CENTRE                       | <b>38</b> HESTERS WAY NEIGHBOURHOOD PROJECT (HWNP)       |
| <b>11</b> CHELTENHAM SPA LADIES FC                        | <b>6</b> HESTERS WAY PARK aka FISHY PARK                 |
| <b>36</b> CHELTENHAM ROTARY                               | <b>17</b> HESTERS WAY PRIMARY                            |
| <b>11</b> CHELTENHAM TRUST—COMMUNITIES                    | <b>6</b> KING GEORGE FIFTH (KGV)                         |
| <b>38</b> CHINESE CHILDREN & PARENTS ASSOCIATION          | <b>9</b> LEISURE at CHELTENHAM                           |
| <b>12</b> CHI WAI MARTIAL ARTS                            | <b>15</b> LITTLE PIPS                                    |
-



- 
- 15 LITTLE SMARTIES
  - 39 LILLIAN FAITHFUL HOMES
  - 39 LISTENING POST
  - 24 MAP
  - 39 MONKSCROFT CARE HOME
  - 39 MONKSCROFT PASTORAL CARE
  - 9 MULTI USE GAMES AREA (MUGA)
  - 38 NEIGHBOURHOOD PROJECT SHOP
  - 39 NEIGHBOURHOOD WATCH ASSOCIATION
  - 10 OASIS CENTRE
  - 27 OPTICIANS
  - 39 P3
  - 12 parkrun
  - 7 PARKS DEPARTMENT
  - 19 PATES GRAMMAR SCHOOL
  - 27 PHARMACIES / CHEMISTS
  - 7 PILGROVE WAY PARK
  - 40 POLICE RECEPTION
  - 40 POST OFFICES
  - 10 PRINCE of WALES STADIUM
  - 15 PUDDLES NURSERY
  - 40 REAL LIFE COACHING INTERNATIONAL
  - 40 RECLAIM
  - 17 ROWANFIELD INFANT SCHOOL
  - 17 ROWANFIELD JUNIOR SCHOOL
  - 30 ROWANFIELD LIVING ROOM
  - 17 ROWANFIELD NURSERY
  - 40 SAHARA SAHELI
  - 30 St AIDAN & St SILAS @ OASIS
  - 31 St BARNABAS CHURCH
  - 16 St BARNABAS CHURCH PLAYGROUP
  - 23 St JOHN AMBULANCE
  - 31 St MARK CHURCH
  - 32 St MARKS and HESTERS WAY COMMUNITY CENTRE
  - 31 St MARK's METHODIST CHURCH
  - 16 St MARKS PLAYGROUP
  - 32 St THOMAS MORE CATHOLIC CENTRE
  - 18 St THOMAS MORE CATHOLIC PRIMARY
  - 16 St THOMAS MORE NURSERY
  - 11 SANDFORD PARK LIDO
  - 13 SARACENS FC / CRICKET CLUB
  - 13 SARACENS RUGBY CLUB
  - 23 SEA CADETS
  - 13 SHUKOKAI KARATE
  - 41 SLIMMING WORLD
  - 32 SPRINGBANK COMMUNITY CENTRE
  - 16 SPRINGBANK LITTLE LEARNERS
  - 41 SPRINGFIELD HOUSE
  - 6 SPRINGFIELDS PARK
  - 18 SPRINGBANK PRIMARY ACADEMY
  - 41 SUE RYDER
  - 22 THE ROCK,
  - 16 TINIES NURSERY (at GLOSCOL)
  - 42 TOWNSWOMENS GUILD (ARLE)
  - 7 TRISCOMBE WAY PARK
  - 7 TUDOR COURT PARK
  - 42 UNIQUE SENIOR CARE
  - 42 VISION 21
  - 43 GO VOLUNTEER GLOS
  - 27 WEST CHELTENHAM MEDICAL GP / DOCTOR / DENTIST
  - 43 WIGGLY WORM
  - 23 YOUTH SUPPORT TEAM (YST)
  - 10 YMCA SPORTS CENTRE
  - 42 WEST CHELTENHAM PARTNERSHIP (WCP)
-





Cheltenham  
Lottery

supporting

HESTERS WAY  
PARTNERSHIP



# Play today and support our cause!

- Make a difference to the community and support our cause
- Sign-up for only £1 a week!
- You get the chance to win cash prizes up to £25,000 every week!
- We get 50p from every £1 ticket and a further 10p goes to other good causes
- Join your community in making where we live an even better place

To start supporting, visit:

**[www.CheltenhamLottery.co.uk](http://www.CheltenhamLottery.co.uk)**

and search for: **Hesters Way**



Supporters must be 16 years of age or older