



# viewpoint

Volume 53 - Spring 2025

West Cheltenham's FREE magazine

*FREE IN WEST CHELTENHAM*

# viewpoint

## Spring 2025

- 3 Golden Valley Development** West Cheltenham Partnership and Hesters Way Forum are planning a consultation
- 5 Springbank Community Group** Find out about activities for the SCG's fifth birthday and much more!
- 6 Springbank Rain Garden** Details about the new rain garden at the front of teh Community Centre
- 7 Students Brighten Centre** Gloucestershire College construction students working hard to improve teh community
- 10 Enrich** check out these new opportunities to enhance your health and wellbeing at this friendly and welcoming new project
- 11 Our Place Community Groups** for anyone who wants to relax and make friends
- 12 Animal Experience Days** Inclusive, unique opportunities for young people aged 5-16 to work alongside the rescue animals
- 14 Ash Tree Cafe** Find out about the exciting new summer community café at Hesters Way Community Centre
- 20 The Robins Coaches** If your 8—13 why not drop in to the Oasis MUGA and learn some new footy skills for FREE
- 26 Longfield Charity Shop** find out what happened when teh Mayor opened the new Longfield Charity shop up the Square
- 27 Monkscroft School Development** news from teh Council about the affordable housing planned for the old school site

News, events, activities and stories from the west of Cheltenham in SPRING 2025



Online  
westcheltenham.org/  
viewpoint or 01242 575638

# GOLDEN VALLEY DEVELOPMENT



The new Social Value Strategy launched earlier in the year by Cheltenham Borough Council and HBD describes how *"the Golden Valley Development will create positive impacts for Cheltenham and surrounding areas. It will create opportunities, support local talent, and help the community grow in ways that benefit everyone. By focusing on education, jobs, and community collaboration, Golden Valley will improve quality of life and bring businesses and residents closer together for lasting change."*

## COMMUNITY CONSULTATION

It is with this *community collaboration* in mind that West Cheltenham Partnership and Hesters Way Forum will be running a consultation event for local residents and organisations. The event will help the community to work out how new businesses in to West Cheltenham can support the existing community.

The event will take place at **Hesters Way Community Resource Centre on Thursday May 29th** and will be run in partnership with Gloucestershire Rural Community Council (GRCC) who are experts in supporting and empowering communities through change.

The event will encourage people to say what they need to make west Cheltenham a better place. It might be improved play areas, more nursery spaces, longer opening hours at the library. It could be employment opportunities and apprenticeships... perhaps more community facilities, sports pitches or financial help. This consultation will offer residents a chance to have their say. We may not agree on what we need but we probably do agree that having a voice in the process is essential to make positive change for all.

**Why not come along and have your say!**

# SPRINGBANK COMMUNITY GROUP

## Turning 5, Come and Celebrate!



Springbank Community Group CiC is celebrating five years of supporting our community, and we'd love for you to join us on *Sunday 16th March* 11am – 2pm

The Community Café will be open for anyone who fancies a cuppa, there'll be activities to keep the children entertained, and of course—there will be cake!

This milestone wouldn't be possible without the incredible support of our community, so come along, say hello, and celebrate with us. Spread the word and bring your friends—we can't wait to see you there!

### Celebrating Our First Staff & Volunteer Skills Building Day!

On February many of the volunteers came together for our very first Skills Building Day for our incredible staff and volunteers! It was a fantastic opportunity to develop key skills, strengthen our knowledge, and grow together as a team.

Training sessions covered:

- Safeguarding
- Online Training for our Cafe Volunteers and Youth Workers
- New Food Pantry System

A huge thank you to everyone who attended and engaged so positively. Your dedication makes a real difference!

Massive appreciation to our brilliant facilitators for sharing their expertise and making the day a success. Here's to continued learning and growing together!



### Quiz Night

In December a quiz night was held, over 46 people turned up for this event which raised over £600 and this was split between Springbank Community Group CiC and Maggie's (Cancer Support)

## Pantry News

In the coming few months, a more updated membership system will come into place in the pantry, it will be more automatic and will negate the need to have paper membership forms and in time it will link up to other pantries in Cheltenham.

We would like to thank everyone that still donates to the pantry, we still have new members signing up each week and all donations are gratefully accepted.

Did you know that any leftover fruit veg (not onions) and bread after a Thursday pantry is taken down to Court Farm Stoke Orchard to feed the pigs and it's also used for our allotment.

## Bingo

Last month many people had their dabbers ready for a bingo night. An incredible £400 was raised for the community food pantry, helping to support local families in need.

A special shout-out to Brian for being a brilliant host and to Sarah for all her help behind the scenes.

## Let's Cook with Josie

Josie runs a community interest company teaching people how to cook nutritious, budget friendly meals with easy to follow recipes. Much of her work is based at Springbank Community Group where she runs after-school clubs, holiday classes, family classes & much more.

Classes are aimed at groups or individuals who may be disadvantaged in some way &/or have additional learning needs. She relies on grants, fundraising events, donations of ingredients & volunteers which enables her to reach as many people as possible across the community.

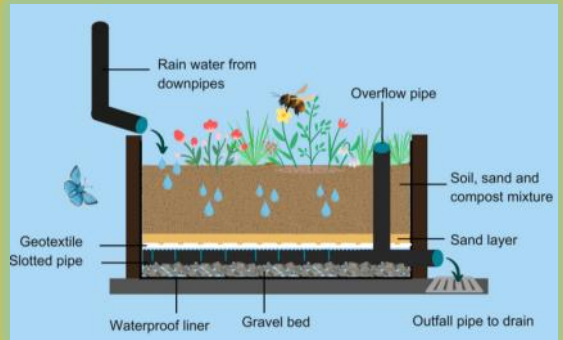


# NEW RAIN GARDEN IN SPRINGBANK

West Cheltenham Partnership have teamed up with Gloucestershire Wildlife Trust to install a Rain Garden in front of the community centre at Springbank.

**What is a rain garden?** A rain garden is designed to capture rain water flowing off roofs and slow the flow of the water back into drains and watercourses.

Rain gardens can help to reduce flooding by storing rain water and reduce pollution by filtering water, whilst also allowing you to create a wildlife friendly feature for your garden that may need less maintenance and watering.



**Why make a rain garden?** Extensive areas of sealed surfaces like tarmac in towns and cities cause problems in heavy rainfall, with drains often becoming overwhelmed. When this happens localised flooding can occur, damaging property and blocking streets. In some cities water run-off into drains may wash oil, heavy metals and other pollutants into watercourses, damaging the plants and animals that live in aquatic environments.



These problems have become worse as towns and cities have grown and are expected to be exacerbated by climate change, which is likely to bring about more frequent and heavier downpours.

The planters have been filled with plants that are not only good for pollinators (insects bees and butterflies) but are tactile too, creating a calming sensory space for children to interact with nature. Once the plants have filled out it will provide an attractive and pollinator-friendly place, in the heart of the community.

# COLLEGE STUDENTS BRIGHTEN UP COMMUNITY CENTRE

Gloucestershire College level 2 multi-skills students have been busy out in the community, gaining real world work experience.

Working at Hesters Way Resource Centre, students were tasked freshening up the facilities by painting the first-floor hallway, offices and meeting rooms spaces.

Andy, West Cheltenham Partnership manager said: "We're delighted to be able to offer the level 2 multi-skills students the opportunity to use their talents to refurbish the corridors, meeting rooms and offices of our Hesters Way Community Centre. The project was initiated through networking with David Cook, multi-skills lecturer and Gayna Griffiths at Cheltenham Borough Homes. Hopefully it'll be the first of many similar projects in years to come."



The colour scheme will match the new lobby area on the ground floor which includes the recently opened Ash Tree Café. In their breaks the students have enjoyed cooked breakfasts at the café in true builders style. Well done to all those involved, we're looking forward to the next project.



# NC Nurseries

*Offering the Natural Choice for Childcare*


## Puddles & Giggles



- Flexible childcare (8am - 6pm)
- Qualified, caring staff
- Fantastic outdoor spaces
- Inspiring indoor rooms & resources
- Healthy meals
- Learning through play
- Engaging and exciting activities

### **Puddles Nursery**

Cassin Drive  
Cheltenham  
Gloucestershire  
GL51 7SU  
01242 527545

 [www.facebook.com/PuddlesNursery](http://www.facebook.com/PuddlesNursery)

### **Giggles Nursery**

Springbank Way  
Cheltenham  
Gloucestershire  
GL51 0LG  
01242 574511

 [www.facebook.com/GigglesNurseryDC](http://www.facebook.com/GigglesNurseryDC)



[www.NCNurseries.co.uk](http://www.NCNurseries.co.uk)

# JOB VACANCY

## Community Development Worker

### Purpose of the job

To help implement the vision of the West Cheltenham Partnership by facilitating community development and identifying opportunities and issues in West Cheltenham

### Role

- To organise, manage and run new activities, events and training particularly at the community centres
- To increase involvement of residents in local activities
- To recruit and manage volunteers to support activities and events
- To liaise with and signpost advice services including benefits, debt, housing, family support, community pantry and debt advice plus mental health services
- To plan and manage the related publicity including social media and community engagement  
To support the community pantry staff with signposting and membership referrals

**Main Location** Hesters Way Community Resource Centre

**Salary** £25-£30k depending on experience

**Closing date** 20th April 2025

See here for application form and full job description or follow the QR code

[westcheltenham.org/vacancies](http://westcheltenham.org/vacancies)



**FREE**



# ENRICH



**Practical tools for a Healthier Lifestyle**



**Your health and wellbeing journey for a happier, healthier you.**  
Every Tuesday 11-1pm

- ★ Healthy cooking
- ★ Gentle movement
- ★ Mind set & motivation
- ★ Wellbeing
- ★ Fun & friendship
- ★ Nature connection

St Marks Church Hall, Church Road, St Marks GL51 7AL  
Wheelchair accessible venue, Everyone welcome



**We are proud to support the LGBTQ+ community**

For info contact:  
[clare.davies@cbh.org](mailto:clare.davies@cbh.org) 07879 316317



# OUR PLACE COMMUNITY GROUPS

Wednesday 12:00–1:30

Lou's Cafe (The Moors)

GL51 9DZ (term time only)



Thursday 9:30–11:00

St Pauls Community Hub,

GL50 4HG (term time only)



Friday 9:30–11:00

Springbank Community Cafe,

GL51 0LH (term time only)



Open to anyone who needs a space to relax  
and meet new friends!

Sessions usually involve relaxed craft activities,  
information sharing and discussions about  
family life!

For more info email [nochildleftbehind@cheltenham.gov.uk](mailto:nochildleftbehind@cheltenham.gov.uk) or  
text/call Louis or Linda on 07553611061/ 07481984338

# Coffee and Chat

for Wellbeing

Hesters Way Community Resource Centre.



Come and join us for a coffee and chat every 3rd Wednesday of the month  
between 10:30am and 12pm.

**ALL WELCOME**

Whether you are feeling lonely, isolated or just fancy a chat, we would love to  
see you.

For further information please email [admin@lpost.org.uk](mailto:admin@lpost.org.uk) or call 01452 383820



[www.fixmystreet.com](http://www.fixmystreet.com)

Register you issues with pot holes, abandoned vehicles, dog fouling, fly tipping, pavements, hedges, trees, street lights, graffiti on the website above!

# Animal Experience Days

## Cheltenham Animal Shelter

Our Animal Experience Days are inclusive, unique opportunities for young people aged 5-16 to work alongside the rescue animals at Cheltenham Animal Shelter during the school holidays. Attendees will learn about responsible pet ownership, pet safety, and other animal related activities.



During the session, attendees experience an animal interaction with our rescue dogs, cats, and small animals, clean a pen or kennel, create a craft or enrichment item, and learn how to safely interact with animals and understand their behaviour.



Each holiday we also host a session aimed for young people aged 12-16 (secondary school students.) The session follows the same format; however, we go into more depth on our pet's body language and behaviour and include a dog training activity.

The sessions are available during term time upon request for home-educated young people, please contact us for more information.

For more information, please email [education@gawa.org.uk](mailto:education@gawa.org.uk) or call 01242 548772 or visit our website <https://gawa.org.uk/animal-days/>



Gloucestershire Animal Welfare Association &  
Cheltenham Animal Shelter

# West Cheltenham Medical

## Our Practice Boundary

We are now accepting  
new patients located  
in our catchment area  
of GL50-GL53

### REGISTERING WITH US IS EASY!

*simply scan the barcode or  
register via the NHS England  
form or visit the practice!*



### accurx

Innovative patient-led triage  
system 'accurx' to support quick  
allocation of appointments to  
patients with the appropriate  
clinician

### More Information :

01242 507111



[inspire-healthcare.co.uk](https://www.inspire-healthcare.co.uk)



Hesters Way Community  
Centre



Cassin Drive  
Cheltenham

GL51 7SU





**ASH TREE**  
COMMUNITY CAFE

# NEW COMMUNITY CAFÉ OPENS IN HESTERS WAY

West Cheltenham Partnership has just opened the new Ash Tree Community Cafe in the foyer at Hesters Way Community Centre. Why not come and enjoy a relaxing cuppa in our welcoming community hub. You can get a tea and home made cake for just £2, a home made soup and bread for just £2.50 and much more from our exciting new menu (see next pages).

We'll be holding activities and events in the "blue" area of the bright new lobby space. On Mondays and Thursdays we host a watercolour class run by local artist John Hughes. Also on the third Wednesday of the month, counselling charity, Listening Post run a coffee and chat morning open to all.

There will be many more activities once our community development worker is in post— see the advert on page 9 !

We are offering volunteering opportunities at the cafe and already have a friendly team including Clare (photo left), Carol and Emma who are ably supporting Lareina the cafe manager (photo right),

**If you would like to run an event or volunteer please call Lareina or Andy on 01242 575638 for more information.**





ASH TREE  
COMMUNITY CAFE

# ASH TREE COMMUNITY CAFE

Hesters Way Community Resource Centre

Cassin Drive Cheltenham GL51 7SU

01242 575638

OPEN 8am - 2pm weekdays

CARD PAYMENTS ONLY

## BREAKFAST

### FULL ENGLISH

Toast (2) Bacon (2) Sausage, Egg (scrambled or fried) Beans,  
Tomato, Hash brown

£6.50

### VEGGIE

Toast (2) Quorn sausages (2) Egg (scrambled or fried) Hash  
browns (2) Beans, Tomato,

£6.50

### VEGAN

Toast (2) Quorn sausages (2) Avocado, Hash browns (2) Beans,  
Tomato

£6.50

### EXTRAS

Sausages (£1) Hash browns (£1) Bacon (60p) Egg (60p)

Toast (2) with butter

£1.00

Toast (2) with jam / marmalade

£1.20

Beans on toast (2)

£1.80

Beans and cheese on toast (2)

£2.40

Egg (2) on toast (2)

£2.40



## SANDWICHES/ BAPS / BAGUETTES



### FILLINGS

Bacon, Sausage, BLT, Ham,  
Cheese, Tuna Mayo,  
Coronation chicken  
Egg mayo,  
Avocado and tomato,  
Hummus, roasted red pepper

SANDWICHES FROM £2  
BAPS FROM £2.60  
BAGUETTES FROM £3.30

ALL SERVED WITH SALAD GARNISH & CRISPS

All meals are available as small plates at half price for children and those with a smaller appetite!

## TOASTIES & PANINIS

### FILLINGS

Cheese and tomato / chutney  
Ham and cheese, Tuna Melt  
Bacon and cheese,  
Mozzarella, tomato and pesto  
Avocado, cheese and tomato

**TOASTIES FROM £3**  
**PANINIS FROM £3.50**



**ALL SERVED WITH SALAD GARNISH & CRISPS**

## JACKETS & FALAFELS & SOUP



### FILLINGS

Baked beans or cheese	£4.50
Tuna mayo	£4.80
Coronation chicken	£5.00
Add extra cheese or beans	£0.50

Falafel with hummus sliced pitta and salad	£4.50
Soup of the Day with a bap (please enquire)	£2.50

**ALL SERVED WITH SALAD GARNISH & CRISPS**

## DRINKS & SNACKS

A variety of teas and coffees are available from the counter plus ice creams, cakes, snacks and crisps and cold drinks

Espresso	£1.80
Americano	£2.20
Cappuccino	£2.60
Flat White	£2.60
Cafe Latte	£2.60
Macchiato	£2.60
Instant Coffee	£1.00

All available decaffeinated

Hot chocolate	£2.60
with cream and marshmallows	£2.80
Mug of Tea	£1.00
Pot of Tea	£1.80
Herbal teas	£1.50



### Pipers Crisps:

Sea Salt, Cheddar, Vinegar and Sea Salt	£1.20
Pom Bears	£0.70
Snickers Twix Kit Kat	£1.20
Mars Galaxy Caramel	£1.20
Freddo	£1.00
Biscuits (Pack of 3)	£0.60

**Ice cream home made cakes priced and available at the counter**



## KIDS LUNCH BOX £4

Kids Lunch Box including cheese or ham sandwich, fruit, Pom Bears, Fredo chocolate and Frube yoghurt in a fun animal box with crayons and a picture to colour.

**Call Lareina for information on outside catering 01242 575638**



**ASH TREE**  
COMMUNITY CAFE

# ELEVATE

SUPPORTING YOUNG PEOPLE AS THEY  
JOURNEY THROUGH LIFE

# AT ELEVATE WE ...



GET  
CREATIVE



EAT

SNACKS!



PLAY

GAMES

AND WE  
EXPLORE



Mental  
Health



Surviving  
School



Christian  
Faith

Social  
Skills



Handling  
Emotions



St Barnabas  
Church

GL51 7JY



Mondays

5:30PM-6:45PM



£1 per session



School Years 5-10



therock.uk.com



07512 070464



The  
ROCK  
Transforming Lives

Charity No: 1190651

Rock staff are DBS checked and committed to  
safeguarding children and young people



DIOCESE OF  
GLOUCESTER

Sign up

now



# HALF-TERM

# FOOTBALL SESSIONS



Where: Oasis MUGA  
Hesters Way

When: 14, 15, 22, 23, 25 April

Time: 1pm to 3pm

Ages: 8 – 14 years old

Cost: FREE

Info: [will.mills@ctfccp.com](mailto:will.mills@ctfccp.com)

WCP



Premier League  
**Kicks**



Community  
trust

# Skills Hub Timetable

## APRIL 2025

Dates	10 am - 12 noon	1 pm - 3 pm
Wed 2 April	<b>WORK CLUB</b> Support to gain employment. CV & interview hint and tips	<b>DROP-IN</b> Training & employment support
Thu 3 April	<b>VOCATIONAL COURSES</b> Highfield accredited online courses	<b>DIGI HUB</b> Support with getting online, emails, devices & more
Wed 9 April	<b>WORK CLUB</b> Support to gain employment. CV & interview hint and tips	<b>MANAGING UC</b> Support to keep up with your journal & commitments
Thu 10 April	<b>DIGI HUB</b> Support with getting online, emails, devices & more	<b>APPLICATION FORMS &amp; INTERVIEW TECHNIQUES</b> Support in preparing for interviews
Wed 16 April	<b>WORK CLUB</b> Support to gain employment. CV & interview hint and tips	<b>SHORT COURSES</b> Health and wellbeing online courses
Thu 17 April	<b>DROP-IN</b> Training & employment support	<b>VOCATIONAL COURSES</b> Highfield accredited online courses
Wed 23 April	<b>WORK CLUB</b> Support to gain employment. CV & interview hint and tips	<b>ONLINE SAFETY</b> Internet safety awareness
Thu 24 April	<b>VOCATIONAL COURSES</b> Highfield accredited online courses	<b>DIGI HUB</b> Support with getting online, emails, devices & more
Wed 30 April	<b>WORK CLUB</b> Support to gain employment. CV & interview hint and tips	<b>DROP-IN</b> Training & employment support

**FREE TO ATTEND**

For more info - email [tes@cbh.org](mailto:tes@cbh.org)



part of



# Keep Springfields Tidy

## SPRINGFIELD PARK LITTER PICKERS

### VOLUNTEER LITTER-PICK

### 10am FIRST SATURDAY OF THE MONTH

### FEEL FREE TO JOIN US

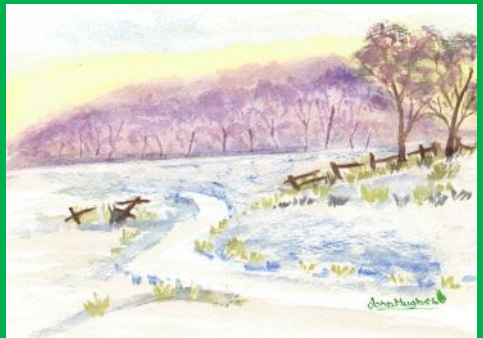
## Watercolour Classes

If you're new to painting or would like to get back into the art, then why not pop in to our watercolour painting class at the lobby café in Hesters Way, Mondays and Thursdays 2-4pm.

John Hughes, an experienced local art teacher will be offering courses after Easter. He'll help you learn about 'wet on dry', 'wet on wet', and watercolour washes and all the basic techniques to get you started.

Pay what you can afford and also benefit from a starter pack including paints, brushes and a paint board.

To sign up call John on 07735139170



# New Longfield Charity Shop for Coronation Square

## We LOVE pre-loved!

Have you spotted the new charity shop in Coronation Square? Longfield Community Hospice's latest store was opened in January this year, by the Mayor of Cheltenham, and there's something for everyone inside.

Pop into this bright and modern charity shop to browse affordable and unique second-hand clothing, accessories, electricals, music, books and homewares.

This is Longfield's fourth charity shop in Cheltenham. The well-loved local charity also has shops on the Bath Road, Pittville Street and Up Hatherly – as well as 17 other locations across Gloucestershire.



**Pop in to a Longfield shop today:**

- Discover one-of-a-kind finds at prices that won't break the bank
- Buy sustainably and reduce landfill
- Support hospice care in Gloucestershire

The best bit about shopping with Longfield? The community feel-good factor. Every item you buy supports families across Gloucestershire whose lives have been turned upside down by a life-limiting diagnosis or grief. The charity, based near Stroud, offers counselling, wellbeing courses, hospice care in the home, and bereavement support. All services are completely free to patients and their families.

The Longfield shop on Coronation Square is open Monday to Saturday from 9:15am until 5pm. Pop in for a browse and chat to our friendly team about donating items or volunteering your time.

[Longfield.org.uk/shops/find-your-local-shop](http://Longfield.org.uk/shops/find-your-local-shop)





**LONGFIELD**  
Community Hospice

**Now Open**  
Mon – Sat  
9.15 – 5.00pm

Longfield Community Hospice is proud to announce the opening of a new shop in Unit 2 & 3 Gresham Court, Coronation Square

[www.longfield.org.uk](http://www.longfield.org.uk)

@longfield\_care  
f Longfield Hospice

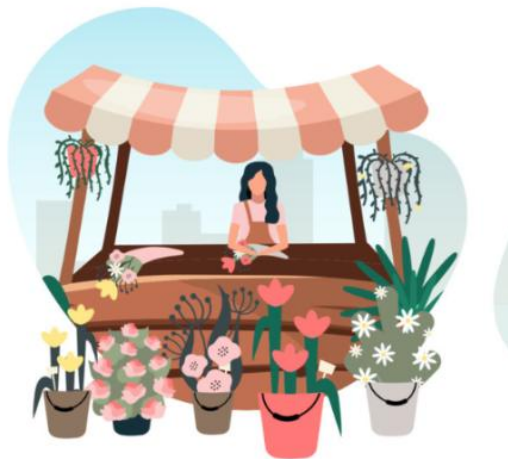


Registered with  
**FUNDRAISING  
REGULATOR**

Registered Charity Number 298627

# Talking Heads Pop-Up Shop

**Talking Heads Hair  
& Beauty Salon**  
76 Tennyson Road,  
St Marks, GL51 7DB



## Dates 2025

**Monday 2<sup>nd</sup> June – 10.00 a.m – 2.00 p.m**

**Monday 1<sup>st</sup> September – 10.00 a.m – 2.00 p.m**

**Sunday 7<sup>th</sup> December – 11.00 a.m – 5.00 p.m**

**A SELECTION OF SMALL BUSINESSES SELLING THEIR  
PRODUCTS, CRAFTS, FRESH PRODUCE,  
HOT BEVERAGES & CAKES.**



## FREE ENTRY!

[talkingheadscheltenham@gmail.com](mailto:talkingheadscheltenham@gmail.com) /  
01242 239056

[www.talkingheadscheltenham.co.uk](http://www.talkingheadscheltenham.co.uk)  
FB: TalkingHeadsCheltenham

# A new vicar in the West Cheltenham Parish

West Cheltenham Parish is thrilled to introduce Revd James Faragher as their new Associate Rector at St Barnabas 'Church. James officially began his ministry with us at the end of October 2024, at a special service at St Barnabas. As he strolls through the streets, he's gradually getting to know our vibrant community.



For the past seven years, James has served as the vicar of St Oswald's Church in Coney Hill, a busy estate parish on the outskirts of Gloucester. Now, he brings his wealth of experience to our parish.

James is married to Emma, and together they have two children, Molly and Bessie. Originally hailing from the Isle of Man, James and his family have had quite the adventure, living in north west London, Hertfordshire, and Nottingham, before finally settling here in Gloucestershire. Before becoming a vicar, James was a youth worker at two different churches.

When he's not at church, James is a passionate Liverpool Football Club supporter. He also enjoys paddle-boarding, playing the guitar, gardening, and crafting home-brew beer and wine.

James is eager to connect with local residents, particularly in the Rowanfield area, and to build strong relationships with other community groups and organisations. He is deeply committed to making St Barnabas 'Church a welcoming and inclusive space for everyone, regardless of age, background, or ability, to explore Christian faith together.

Reflecting on his new role, James shared, "St Barnabas 'Church is a welcoming place for everyone, whether you've been to church before or not. We hope you'll find a warm and friendly community here. Church is like a big family where everyone is included. And can also be a lot of fun!"

James will be actively engaging with local schools and is often seen around the parish, either on foot or on his bike. If you spot him, don't hesitate to say hello and have a chat. For those wishing to connect with him for a conversation, to arrange a meeting, or to share a prayer request.

You can reach him at [james.faragher@westchelt.org.uk](mailto:james.faragher@westchelt.org.uk), call him on 07881 278730, or visit St Barnabas 'Church, Orchard Way, on any Sunday at 10.30am.

## Hesters Way Library

**Library Membership and Activities/Events are FREE**



Hesters Way Library  
 Tuesdays | 10:30 - 11:00  
 Saturdays | 10:30 - 11:00



### Opening Times:

Monday: 13:00 - 17:00

Tuesday: 10:00 - 18:00

Wednesday: 10:00 - 13:00

Thursday: Closed

Friday: 14:00 - 17:00

Saturday: 10:00 - 13:00

### Regular activities include:

Baby Bounce & Rhyme

LEGO Club

Library Littles

Library Club



[hwlib@gloucestershire.gov.uk](mailto:hwlib@gloucestershire.gov.uk)



01242 514969



Goldsmith Road, Hesters Way,  
 Cheltenham, GL51 7RT



For more events please scan the QR Code and browse our online catalogue.

# MONKSCROFT SCHOOL SITE DEVELOPMENT

Cheltenham Borough Council's (CBC) major developments and regeneration team hosted a public exhibition on Friday 7 March at Hester's Way Community Resource Centre. The exhibition gave members of the public the opportunity to discuss the proposed development scheme of the former Monkscroft School site. Grass Root arranged the event Planning and supported by key members from the design team; TSA Riley, BDP and Rappor.

The emerging scheme offers 100% affordable housing, consisting of 70 new, shared ownership and social rented properties. There will be a mix of 1-, 2-, 3-, 4- and 5-bedroom, energy efficient homes, with access on to the site from Shelley Road and Shakespeare Road.

Andy Hayes, the manager of West Cheltenham Partnership, as well as the team at CBC, deemed the exhibition a success, with close to 40 members of the public attending, including a group of residents from the local care home.

**During the exhibition, display boards were showcased offering detailed information on the scheme and artistic impressions of the proposed development. Attendees actively engaged with members of the team, asking questions, and offering feedback via questionnaire.**



Cabinet member for major developments and housing delivery, Councillor Peter Jeffries, also attended the exhibition, and spent time talking to the design team and members of the public.

Cllr Jeffries said: "In various locations around Cheltenham, we are working hard and at pace to bring much needed new and affordable homes to local people. We want to get people off waiting lists and into homes they so desperately need.

"This exciting scheme offers a wide-ranging mix of high quality, environmentally friendly properties to suit the different needs of local people and families, on a carefully and thoughtfully designed site.

"It's important that we gather as much feedback as possible as part of our consultation which is why it was great to see so many local residents come along to the event and have the opportunity chat to them in person about the scheme."



**CBC major developments and regeneration team were happy to collaborate with the community centre around this event and plan to organise future community engagement events at the centre.**

# 11+

I N S P I R E  
E X C E L  
L E A R N

## Grammar

## Schools

## Entrance Test Preparation



Further information

**WEEKLY  
GROUP TUITION**

**£15**

PER HOUR

**4-DAY  
CRASH COURSE**

**COVERING  
ALL SUBJECTS &  
ONE  
MOCK EXAM**

- 2-hour mock exams; GL format.
- Detailed result & feedback.
- Online practice resources.
- Held in exam-like environment.

**MOCK  
EXAMS**

DATES ON  
WEBSITE

Call: 07425088279

Email: [contact@learnexcelinspire.com](mailto:contact@learnexcelinspire.com)

Website: [www.learnexcelinspire.com/11plus/](http://www.learnexcelinspire.com/11plus/)

# Palm Sunday Pilgrimage & PICNIC

SUNDAY 13TH APRIL



N.B. PICNIC IS  
WEATHER  
PERMITTING

## WITH DONKEY RIDES FOR CHILDREN!

Join us as we prayer walk around the churches of West Cheltenham, gathering at St Mark's, GL51 7AL at 10.20am

Or join in the last leg of the journey, meeting at Hesters Way Baptist Church GL51 0DH at 12pm to walk to St Aidan's Garden accompanied by the donkey.

Or simply come for the picnic at St Aidan's Garden and join in the fun with donkey rides and other activities 12.30-2pm

For more info contact [janice.hamilton@westchelt.org.uk](mailto:janice.hamilton@westchelt.org.uk) 07749 130323



The Parish of  
West Cheltenham

Spring relaunch of

## St Aidan's Gardening Group

Sowing, watering, pruning,  
reaping fruit and veg to enjoy

Wednesdays 9.30-10.30am

Last Saturday of a month  
10-11am

Drop in for as long or as little as  
you can. All welcome!

*N.B. Weather permitting*

WORKDAY - Saturday 29th March 9.30-11am  
litter picking, site clearing, bed preparation

for more info contact:  
[janice.hamilton@westchelt.org.uk](mailto:janice.hamilton@westchelt.org.uk)  
07749 130323



# FOOD PANTRY DETAILS

	<p><b>CCP</b> 340 High Street, GL50 3HW Tel: 01242 228999</p>	<p><b>Opening Times</b> Wednesdays &amp; Thursdays 9-3 pm</p>
	<p><b>Springbank Food Pantry</b> Ron Smith Pavillion, Springbank way, GL51 0LH Tel: 0754324225</p>	<p><b>Opening Times</b> Tuesdays to Thursdays: 9 - 12 pm Additional Tuesday Hours: 5- 6 pm</p>
	<p><b>Cornerstone Cupboard</b> 1 Severn Road, Whaddon GL52 5QA Tel: 01242 777777</p>	<p><b>Opening Times</b> Thursdays 10:30 - 4 pm</p>
	<p><b>West Cheltenham Food Pantry</b> Hesters Way Resource Centre GL51 7SY Tel: 01242 575638</p>	<p><b>Opening Times</b> Wednesdays 10 -1 pm Thursdays 10 - 12 pm</p>
	<p><b>Lakeside Community Pantry</b> St Margaret's Hall, Coniston Road, GL51 3NU</p>	<p><b>Opening Times</b> Tuesdays 11 - 12 pm</p>
	<p><b>Fresh Hope Family Pantry</b> The Rock, Tewkesbury Road GL51 9AH</p>	<p><b>Opening Times</b> Mondays 3:30 - 5 pm Fridays 9 - 12 pm</p>

# Gardening Club



**A new gardening club will be opening in March at the Hesters Way Community Centre.**

If you've never picked up a trowel before or are green fingered expert, it could be for you! Our resident gardener Jay will be at the centre on the last **Thursday of every month from 10.30am—12.30pm**. Just drop in and he'll provide the tools, help and advice for budding local gardeners. There will be trees to prune, bulbs to plant, herbs to grow and lots of tasks suitable for all. We'll be finishing it all with a with free cuppa and a piece of cake in the new café so why not give it a go!



## Charlie's

**Our next Drop In session will be on:  
April 15th, May 20th, 17th June**

We are delighted to share that Alex will be performing a sound bath at this session. Please bring along anything you need to help you feel comfortable, like a mat, blankets & pillows.



Filming will be taking place during this session.

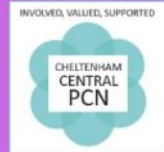
The sound bath starts promptly at 11am. Due to the nature of the activity, no latecomers will be admitted after that time.



As always, Charlie's is open to all those affected by cancer and is free. Tea, coffee and a listening ear is on offer.

**TIME:** 10am - 2pm  
**VENUE:** Springbank Community Resource Centre  
Springbank Way, Cheltenham, GL51 0LH

**Supported by**





West Cheltenham  
COMMUNITY PANTRY

# COMMUNITY PANTRY

## Please help us by donating

The **West Cheltenham Community Pantry** relies on donations in order to provide quality food and essential household goods to those that need it most.

You can donate by offering one-off payments through our donation site which is accessible via the adjacent QR code or [www.westcheltenhampantry.org/donate](http://www.westcheltenhampantry.org/donate)



## Alternatively we welcome the following items;

### Toiletries

e.g. Shower gel, Hand wash  
Bars of Soap, Toothpaste  
Sanitary towels, Tampons  
Shampoo, Conditioner  
Toothbrushes

### Household Goods

Toilet roll, Washing powder  
Fluid detergent, Washing up  
sponges, Washing up liquid etc

### Savoury Food Items

Rice, Tinned tomatoes, kidney  
beans, sweetcorn,  
Baked beans, Canned tuna  
Fruit squash, Tea bags  
Coffee, Porridge / cereals,  
Cooking sauces, Sandwich  
spread, Tomato puree,  
Cornflour,  
Free from items (Coeliac)  
Biscuits / Crackers  
Tomato sauce, Mayonnaise  
Chocolate lunch box bars  
Sweets / Crisps

### Sweet Food Items

Rice pudding, Custard  
Jelly / jam  
Granulated sugar

### Baby / Children's Goods

Nappies, Baby wipes  
Baby bubble, toothpaste, Sham-  
poo, Jars of baby food  
Baby milk formula, Dummies

**NB we cannot accept refrigerated or frozen products**

## Donated items can be delivered to;

Hesters Way Community Resource Centre, Cassin Drive, Cheltenham, GL51 7SU

**Pantry Unit 2b** on Wednesday or Thursday 10am—1pm  
**Reception Foyer Donations Box** on weekdays 8.30am—6pm

[www.westcheltenhampantry.org/donate](http://www.westcheltenhampantry.org/donate)

# Thank You