

WEST CHELTENHAM PARTNERSHIP

AGM AND
PARTNERSHIP
MEETING

17th November 2025





THANKS

We would like to thank the following for their contributions and commitment to the Partnership this year

STAFF & VOLUNTEERS

- We're very pleased to welcome new recruits **Maria** in her community development role and **Iain** the new café manager, who are both already performing well. **Jacquie**, **Rachel** and **Kelly**, for all their hard work at the Dreamscheme and a special mention to **Andy**, **Emma**, **Nick**, **Katherine** and **Jake** for their unstinting support! Not to mention **Adrian Thompson** in his facilities management role - thanks to all!!

DIRECTORS

- Board of Directors for their commitment, support and guidance throughout the year and particularly to **Ryan**, **Janice**, **Wendy** and **Simon** for their hard work this year and to **Mark** who left us earlier in the year after 13 years of support - good luck!

EVERYONE ELSE ☺

- The individuals, residents, volunteers, officers and organisations who attend meetings and commit time and energy to all our partnership projects.

FUNDING AND SUPPORT

FUNDING

- **Cheltenham Borough Council**
 - Community Resilience Fund** – Community Pantry
 - Community Infrastructure Levy** Springbank Creative Space
 - Community Pride** Springbank youth project
- **Gloucestershire County Council** Thriving communities - CCTV
- **NHS ILP** – Community development
- **Enovert** Springbank Creative Space
- **National Benevolent Charity** – (Dreamscheme)
- **Feed Cheltenham and YMCA** (Community Pantry)
- **Severn Wye** Sustainable buildings
- Public financial support totals £5,000 since opening and food donations from **St Thomas More, Leckhampton, and West Cheltenham Churches** plus **Pates School** have helped stock the pantry.



SUPPORT

- Thanks go out to all **partners** for their support and cooperation.
- **GRCC** and **Feed in Tariff**
- **Bromford, Pates, All Saints Academy, West Cheltenham Parish, DS Legal, CBC and GCHQ** for their invaluable in-kind contributions

Our thanks go to all!



STRATEGY 2024-27

Hesters Way Partnership (HWP) Board has progressing the strategy initiated in 2024.

- After an in-depth assessment and appraisal, the new strategy was completed in early 2024.
- The new strategy set out these priorities.
 1. To develop the **sustainability** of the organisation, including a **secure financial** position
 2. To improve HWP **governance** and related systems and processes
 3. To focus on using a **community development** approach to increase connection with residents, groups and organisations
 - activities at the community centres
 - young people engaged
 - volunteers are recruited
 - better communication
 4. To influence the design and development of the **Golden Valley** Development and its **integration with communities** in West Cheltenham
- An action plan for year one was completed, and a review of progress will take place in April 2026.



COMMUNITY CENTRES



- **HESTERS WAY AND SPRINGBANK**

- **FACILITIES MANAGEMENT**

- This year we have improved the facilities at Hesters Way in partnership with Gloucestershire College Construction Department. The students painted the corridor on the first floor as a work experience module and we completed the project with a new carpet.
- Lifts and roof leaks were an issue but finally repaired!

- **TENANTS**

- Tenants provide services to the local community including;
- West Cheltenham Surgery and Dentists, Cheltenham Borough Council, Desirable Childcare, The Cheltenham Pharmacy, Glos NHS Health and Care / District Nurses, Sphere Construction, Chinese Childrens and Parents Association, Listening Post, Head to Toe Health, Andrew Bird Hearing Brighter Homecare



COMMUNITY CAFE

- Opened in JANUARY 2025
- Serving main meals, snacks , drinks and chef's specials
- Subsidised prices
- Community meals



ASH TREE COMMUNITY CAFE FOOD MENU



COOKED BREAKFAST

ILL ENGLISH (2) Bacon (2) Sausage, Egg (scrambled or fried) ans, Tomato, Hash brown	£6.50
EGGIE (2) Quorn sausages (2) Egg (scrambled or fried) ish browns (2) Beans, Tomato,	£6.50
EGAN (2) Quorn sausages (2) Avocado, Hash browns Beans, Tomato	£6.50
TRAS usages (E1) Hash browns (E1) Bacon (60p) Egg (60p)	



LIGHT BREAKFAST

Toast (2) with butter	£1.00
Toast (2) with jam / marmalade	£1.20
Beans on toast (2)	£1.80
Beans and cheese on toast (2)	£2.40
Egg (2) on toast (2)	£2.40



SANDWICHES/ BAPS / BAGUETTES

FILLINGS	SANDWICH	BAP	BAGUETTE
Bacon	£3.20	£3.80	£4.50
Sausage	£3.50	£4.10	£4.80
BLT	£3.75	£4.45	£5.00
Ham	£2.50	£3.10	£3.80
Cheese	£2.50	£3.10	£3.80
Tuna Mayo	£2.50	£3.10	£3.80
Coronation chicken	£3.50	£4.10	£4.80
Egg mayo	£2.00	£2.60	£3.30
Avocado and tomato	£3.50	£4.10	£4.80
Hummus, roasted red pepper	£3.50	£4.10	£4.80



ALL SERVED WITH SALAD GARNISH & CRISPS
 meals are available as small plates at half price for children and those with a smaller appetite!
 Hesters Way Community Resource Centre Cassin Drive Cheltenham GL51 7SU 01242 575638



COMMUNITY DEVELOPMENT

Maria started in July 2025
funded by NHS and GCC

Community development

Activities / Partnerships

Pantry support



Water Colour Painting Classe.

Join your first class for free.
Afterwards, donations help support
future sessions.

Venue:

The Hub - West Cheltenham at
Hesters Way Community Resource
Centre

WEST CHELTENHAM
PARTNERSHIP

Monday's 2pm-4pm
Thursday's 2pm-4pm





COMMUNITY PANTRY

The West Cheltenham Pantry Project was conceived back in 2018

Pantry regularly supports 70 people a week with a total membership of over 150 members

The Pantry has served over 500 individuals and families since inception

Grant support from to Cheltenham Borough Council, Gloucestershire County Council, NHS. Further funds supplied by #FeedCheltenham, Cheltenham Lions Club

Public financial support totals £5,000

Food donations from St Thomas More, Leckhampton, and St Barnabas Churches plus Pates and St Marks schools



West Cheltenham
COMMUNITY PANTRY





CHILDREN AND YOUNG PEOPLE

PROJECTS

- **Sports coaching at the MUGA**, Oasis during spring, autumn holidays with Cheltenham Town FC.
- **Dreamscheme** – Continued for its 14th year with Hesters Way Primary School. New funds for the project are now coming **National Benevolent Charity**
- The **Children and Young People's network** continues to operate with members from a variety of organisations working collaboratively and supplying activities locally.
- Special mention to **Springbank Community Group** who have supported youth outreach work in Springbank and the new youth club on a Thursday evening funded by the partnership since 2023.
- The **Springbank Creative Space** at SCRC is home to the youth club and the Music Works Project . Including the ever popular Music Bus
- New projects will be taking place in 2026 in collaboration with The **Everyman Theatre**





NEIGHBOURHOOD DEVELOPMENT PLAN

The Hesters Way Forum has formulated visions and aspirations for the future and is finalising policy statements. Ideas include;

- The Hesters Way Forum has led community discussions with Golden Valley developers to ensure the best outcomes for the people of West Cheltenham
- For details see the website www.hesterswayforum.co.uk
- The Forum has raised funds to improve the play area at Fiddlers Green. Sums were donated by Enover and The CBC Community Infrastructure Levy to install two pieces of play equipment as part of the park redesign
- The Forum ran a consultation in May regarding what social value the community would like to see from the Golden Valley Development



COMMUNITY ENGAGEMENT

- Community Meetings
 - **Children and Young People** 4 meetings per year
 - **Neighbourhood Development Plan** 40 meetings
 - **Community Consultation** 69 responses
 - **Cheltenham Communities Partnership**
 - **Cheltenham Culture Board**
 - **Cheltenham Sports Strategy**
 - **NHS Wellbeing Project**
 - **VCS Forum**



GOLDEN VALLEY DEVELOPMENT

COMMUNITY CONSULTATION

Hesters Way Community Resource Centre

Thursday May 29th

10am—1pm—Organisations

BUFFET LUNCH

2pm—6pm—Residents

West Cheltenham Partnership and Hesters Way Forum will be running a consultation event for local residents and organisations to work out how the new businesses in West Cheltenham and the developers of the site can best support the existing community.

The event will take place at **Hesters Way Community Resource Centre on Thursday 29th** and will be run in partnership with Gloucestershire Rural Community Council (RCC) who are experts in supporting and empowering communities through change.

The event will encourage people to say what they need to make west Cheltenham a better place. It might be improved play areas, more nursery spaces, longer opening hours for the library, employment opportunities and apprenticeships... perhaps more community facilities, sports pitches or financial help. This consultation will offer everyone to have their say.

Come along and have your say!





ENVIRONMENT / RENEWABLES

PROJECTS

- **Veg patch / bug hotel**
 - We have a contract with Grundon for food recycling and a new office food recycling scheme is planned for 2025
- **Gardening Club**
 - We have teamed up with Goldfinch Greenscapes who provide gardening services to the CRCs to offer opportunities for locals to help I the gardens
- **Rain Garden**
 - with support and funding from the Gloucestershire Wildlife Trust we installed a rain garden at the front of the Springbank Community Resource Centre
- **Hesters Way Solar Panels**
 - Solar project 1 – 65MWh generated to date – saving 12,500kg CO2
 - Solar project 2 – 260MWh generated to date – saving 50,000kg CO2
- **Springfield Park Green Flag**
 - for the 15th year announced in October
- **Green Energy**
 - Hesters Way have a green tariff for the electricity used at both CRCs



COMMUNICATION

VIEWPOINT

- Local news, stories, events and photos. Copies distributed locally.

DIRECTORY

- List and map of activities, groups and organisations.

WEBSITES

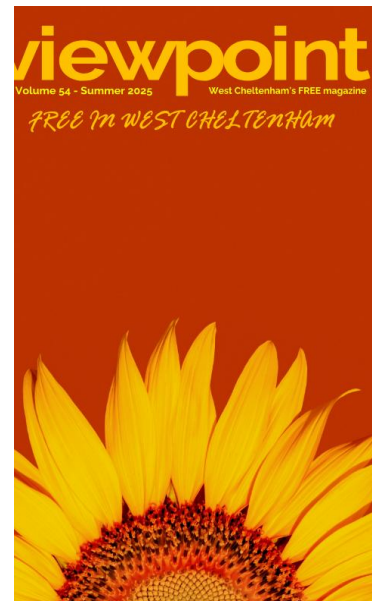
- Resource for meeting minutes, links and background information.

INSTAGRAM

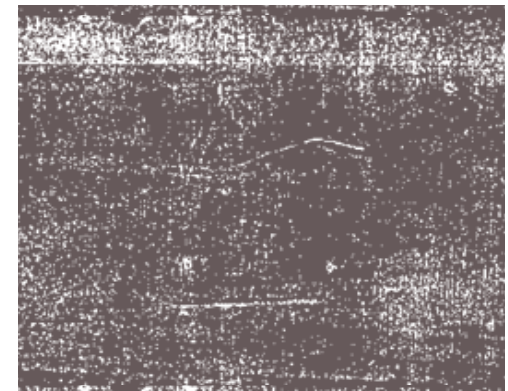
- Currently have 200+ followers.

FACEBOOK

- Currently we have 661+ likes 736 follows



WEST CHELTENHAM PARTNERSHIP SPRINGBANK COMMUNITY			
Time	When	Cost	Co
MONDAY			
9.00 – 17.00	Term Time	Appointments	ww
10:00 - 12:00	Fortnightly	FREE	Jus
17:00 - 20:00	Weekly	ETBC	Br
TUESDAY			
10:30 - 11:30	Weekly	FREE	Mi
13:30 - 15:30	Weekly	FREE	Pe
16:30 - 20:30	Weekly	FREE	Jus
17.30 & 19.30	Weekly	£5	Cl
WEDNESDAY			
10:00 - 12:00	Weekly	FREE	Ga
10:00 - 13:00	Weekly	£4 members	07
10:30 - 12:30	Monthly	FREE	01
12:00 - 14:00	Weekly	FREE	Jus
13:00 - 15:00	Weekly	FREE	Ga
17:00 - 19:00	Term Time	ETBC	Te
17:00 - 19:00	Term Time	ETBC	Sa
18.00 – 19:00	Weekly	ETBC	07



What We Do

Get Help

Get Involv

Sign Up

MDF

What We Do



A photograph of two children in a park. A young girl in a light blue dress stands on the left, holding a watermelon slice. A boy in a yellow shirt is lying in a blue hammock on the right, eating a watermelon slice. The background shows a park with trees, a building, and other people.

COMING SOON

- More HW/CRC Community Lunches
- Everyman collaboration
- More West Cheltenham Hub activities
- West Cheltenham Yoga
- Volunteering opportunities
- Training and Education
- Sports Coaching Project – Easter 2026
- 16th Green Flag Award (Springbank)
- Community Gardens...

Thanks for listening and here's to a great 2026!